

St. Augustine, Florida Back Bay Coastal Storm Risk Management (CSRM) Feasibility Study

MONTHLY PROGRESS MEETING

MAY 2025

**PLEASE MUTE YOUR PHONE AND COMPUTER
TO AVOID BACKGROUND DISRUPTIONS.**

WE WILL START PROMPTLY AT 1:05

Presented by:

Jason Harrah, Senior Project Manager (Jacksonville District, USACE)

Marty Durkin, Planning Technical Lead (Jacksonville District, USACE)

Jessica Beach, Chief Resilience Officer (City of St. Augustine)



CITY OF
ST AUGUSTINE.
EST. 1565

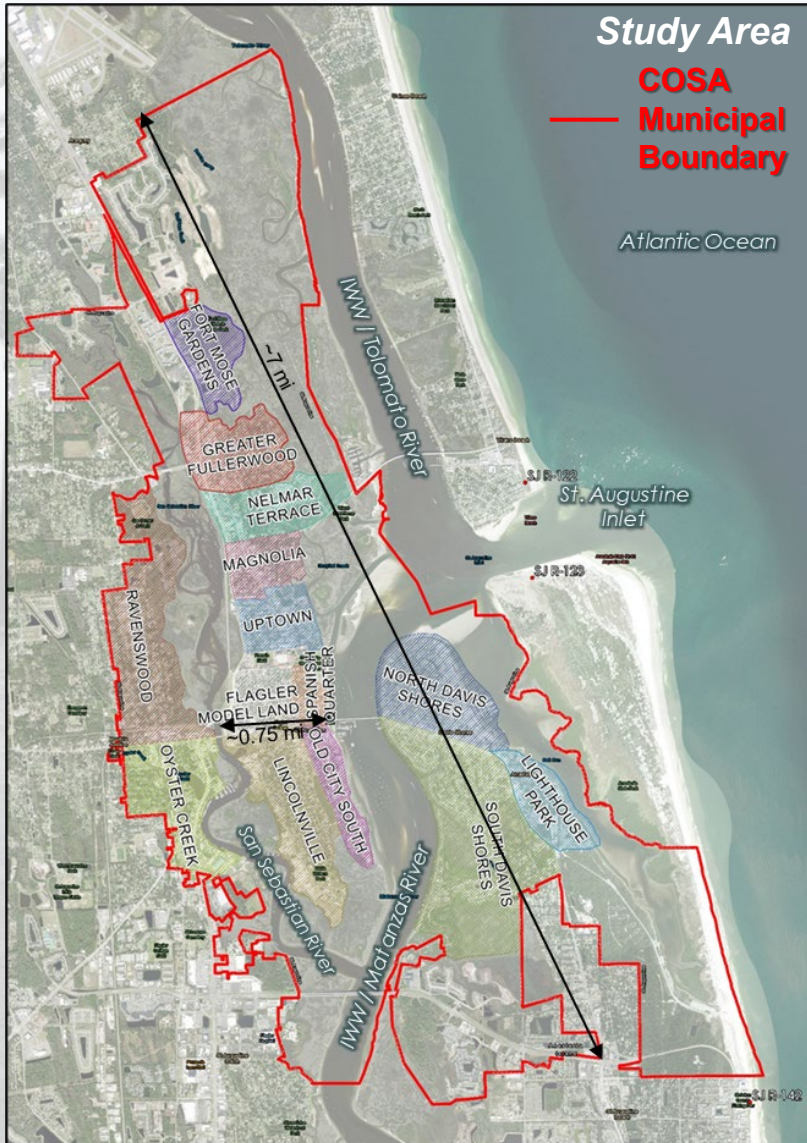


AGENDA



BUILDING STRONG

- Opening Remarks
- Study Overview, Schedule, & Budget
- Study Analysis To Date
- Schedule Updates (90-Day Window)
- Discipline Specific Study Updates
- Upcoming Public Engagements
- Sponsor Remarks
- Agency Questions/Comments
- Public Comments
- Closing Remarks



Study Authority: House Resolution 2646 (June 21, 2000): St. Johns County, Florida

Resolved by the Committee on Transportation and Infrastructure of the United States House of Representatives, That in accordance with Section 110 of the River and Harbor Act of 1962, the Secretary of the Army, acting through the Chief of Engineers, is **requested to survey the shores of St. Johns County, Florida**, with particular reference to the advisability of providing beach erosion control works in the area north of St. Augustine Inlet, the shoreline in the vicinity of Matanzas Inlet, and adjacent shorelines, as may be necessary in the interest of **hurricane protection, storm damage reduction, beach erosion control, and other related purposes.**

Non-Federal Sponsor: City of St. Augustine (COSA)

POC: Jessica Beach, P.E., Chief Resilience Officer, jbeach@citystaug.com

Study Area

- Entire COSA Municipal Boundary
- 17 Distinct Neighborhoods
- 3 Separate Land Masses
- Interconnected Water Bodies

Objectives to be achieved within the City of St. Augustine over a 50-year period of analysis from 2035-2085 are to...

1. Manage risk of coastal flood damages.
2. Manage risk to health and life-safety.
3. Manage risk to cultural and natural resources.
4. Manage flooding impacts to the local economy.



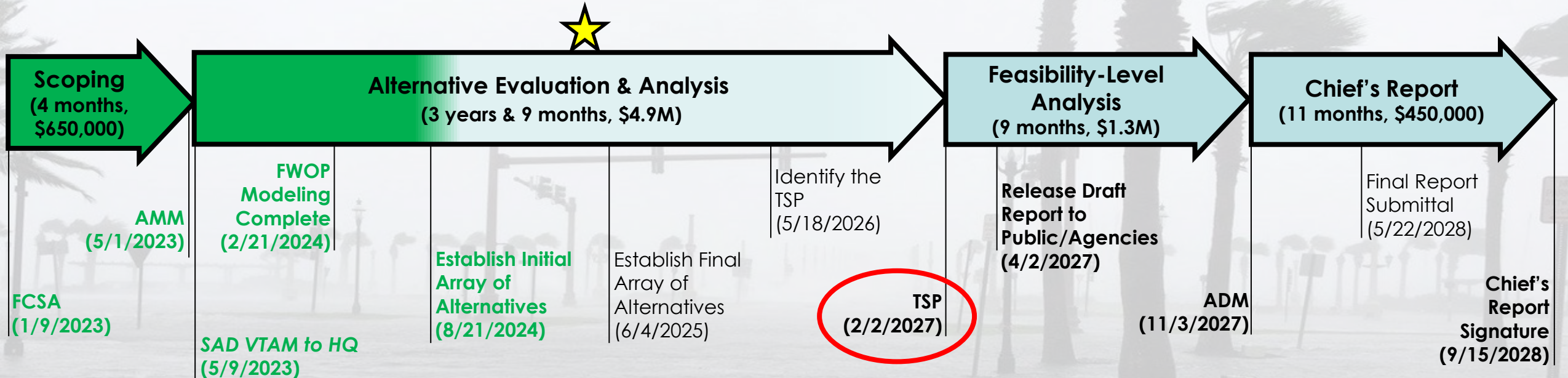
STUDY OVERVIEW

★ We Are Here



BUILDING STRONG

Schedule & Budget Overview: **5 years & 9 months, \$7.3M, Cost Share ~50% Fed, 50% Sponsor**



Key Components of the Study Scope:

- Entire City of St. Augustine (COSA)
- Compound Flooding
- Full Array of Alternatives & Comprehensive Benefits
- Environmental Impact Statement (EIS) Likely
- Robust Community Outreach

Acronyms

FCSA = Feasibility Cost Share Agreement
AMM = Alternatives Milestone Meeting
FWOP = Future Without Project
SAD = South Atlantic Division
VTAM = Vertical Team Alignment Memo
HQ = Headquarters
TSP = Tentatively Selected Plan
ADM = Agency Decision Milestone

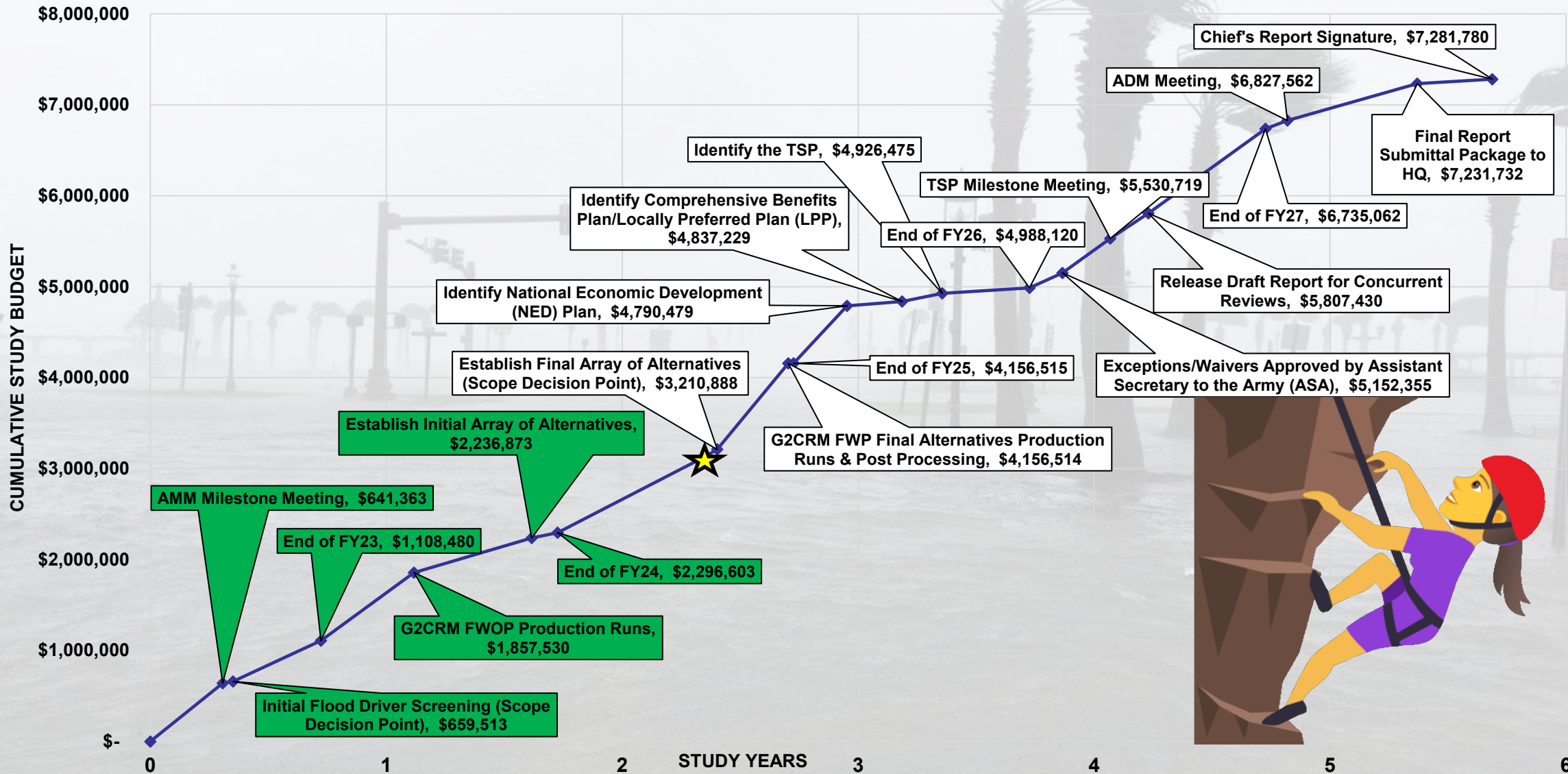
Trusted Partners Delivering Value Today for a Better Tomorrow



STUDY SCHEDULE & BUDGET



BUILDING STRONG



Trusted Partners Delivering Value Today for a Better Tomorrow



PATH FORWARD

KEY SCHEDULE ACTIVITIES - LOOK AHEAD



BUILDING STRONG

| Key Activities | Finish Date |
|--|-------------|
| FCSA Executed | 1/9/2023 |
| AMM Milestone Meeting | 5/1/2023 |
| Initial Flood Driver Screening (Scope Decision Point) | 5/17/2023 |
| End of FY23 | 9/30/2023 |
| G2CRM FWOP Production Runs | 2/21/2024 |
| Establish Initial Array of Alternatives | 8/21/2024 |
| End of FY24 | 9/30/2024 |
| Establish Final Array of Alternatives (Scope Decision Point) | 6/4/2025 |
| G2CRM FWP Final Alternatives Production Runs & Post Processing | 9/22/2025 |
| End of FY25 | 9/30/2025 |
| Identify National Economic Development (NED) Plan | 12/22/2025 |
| Identify Comprehensive Benefits Plan/Locally Preferred Plan (LPP) | 3/17/2026 |
| Identify the TSP | 5/18/2026 |
| End of FY26 | 9/30/2026 |
| Exceptions/Waivers Approved by Assistant Secretary to the Army (ASA) | 11/20/2026 |
| TSP Milestone Meeting | 2/2/2027 |
| Release Draft Report for Concurrent Reviews | 4/2/2027 |
| End of FY27 | 9/30/2027 |
| ADM Meeting | 11/3/2027 |
| Final Report Submittal Package to HQ | 5/22/2028 |
| Chief's Report Signature | 9/15/2028 |

Complete

Ongoing



DISCIPLINE SPECIFIC UPDATES/ACTIONS



BUILDING STRONG

- **Planning Technical Lead:** Marty Durkin
- **Engineering Technical Lead:** Patrick Snyder
- **Economics Lead:** Vongmony Var
- **Environmental Lead:** Katie Lebow
- **Cultural Resources Lead:** Zuzana Chovanec
- **Landscape Architecture Lead:** Sabrina Collins
- **Real Estate Lead:** Chris Bukolt
- **Office of Counsel:** Katie Gwin



UPCOMING PUBLIC ENGAGEMENT



BUILDING STRONG

| Dates | Events |
|--|---|
| May 15 th , 2025 @ 1:00pm | Monthly Webinar |
| June 19th, 2025 @ 1:00pm | Monthly Webinar Cancelled (Juneteenth Holiday) |
| July 17 th , 2025 @ 1:00pm | Monthly Webinar |
| August 21 st , 2025 @ 1:00pm | Monthly Webinar |

Next in person public workshop meeting is planned for October/November 2025 timeframe



PUBLIC OUTREACH (STUDY WEBSITE)



BUILDING STRONG

St. Augustine Back Bay Study - W x

experience.arcgis.com/experience/06bb9c98d9184bd9a374a244f6d27474/

_USACE Finance Mapping News USACE Google

St. Augustine, FL Back Bay Coastal Study

Engineering Economics Environmental Cultural Resources Real Estate About

U.S. Army Corps of Engineers – Jacksonville District Main Website

Welcome to the St. Augustine, Florida Back Bay Coastal Storm Risk Management (CSRM) Web Experience Homepage

Upcoming Events: Our Next Public Meeting will be held on October 4th, 2023 at 6:30pm. < Prev Next >

This Web Experience Homepage is a visual representation of the ongoing St. Augustine CSRM Study. During the study, this page will be updated with the latest information to include meeting agendas, minutes, graphics, etc. to keep the public and agencies engaged as partners in developing a long term solution to flooding within the City of St. Augustine.

U.S. ARMY US Army Corps of Engineers Jacksonville District

ST. AUGUSTINE

Page Contents

- Study Overview
- Plan Formulation
- Monthly Planning Meetings
- Interactive Map
- Public Meetings/Workshops
- News, Social Media, Helpful Links
- Scope, Schedule, and Budget
- Contact Information

For better viewing experience, please use Google Chrome or Mozilla Firefox browsers. Also, please use a PC to interact with the web experience homepage.

ArcGIS Experience Builder technology animates the complicated concepts considered by the design team by allowing users to:

- See the improvements and reduced flooding impacts from this study in the City of St. Augustine (COSA)
- Experience the various alternatives and recommended plan with detailed artistic graphics and renderings
- Examine Engineering, Economic, Cultural, and Key Environmental Features

STUDY OVERVIEW

Study Authority

This study is being conducted under the authority from the June 21, 2000, House Resolution 2646 that granted authority for a Coastal Storm Risk Management (CSRM) study in St. Johns County, Florida:
"Resolved by the Committee on Transportation and Infrastructure of the United States House



<https://experience.arcgis.com/experience/06bb9c98d9184bd9a374a244f6d27474/>

Trusted Partners Delivering Value Today for a Better Tomorrow



PUBLIC OUTREACH (SPONSOR SITES)



BUILDING STRONG

Submit Public Comment

US Army Corps of Engineers Jacksonville
District: St. Augustine Florida Back Bay
Feasibility Study

Scoping Meeting and Comment Period
Notice Letter for USACE St. Augustine
Back Bay Coastal Storm Risk Management
(CSRM) Feasibility Study (PDF)

[Home](#) > [Government](#) > [Resiliency](#) > [Planning/Studies](#) > Back Bay Feasibility Study with the Army Corps of Engineers

Back Bay Feasibility Study with the Army Corps of Engineers

The objectives of the study include (1) reduce flooding caused by coastal storms, extreme high tides, and future projected sea level rise in the study area; (2) explore opportunities to increase community resiliency from future coastal storms. Issues that are anticipated include concern for aesthetics, cultural resources, recreation, socioeconomic, environmental justice, wetlands, fish and wildlife resources, threatened and endangered species, and water quality. CSRM measures to be evaluated may include a combination of structural (i.e., tidal gates, seawalls, revetments, levees, drainage improvements, building elevation, etc.), non-structural (i.e., relocation, buyouts, etc.), and natural and nature-based features (i.e., living shorelines, vegetated features, oyster reefs, and maritime forests). Public Comments will be accepted throughout the life of the study.

Back Bay Signing Ceremony January 9th, 2023



Submit Public Comment



Email: BackBay@citystaug.com



**US Army Corps
of Engineers**®
Jacksonville District

[Jacksonville District Website](#)

[Monthly Project Delivery Team \(PDT\) Meetings](#)

Social Media

<https://www.instagram.com/citystaug/>
<https://www.facebook.com/citystaug>
<https://twitter.com/citystaug>



CLOSING REMARKS/QUESTIONS



BUILDING STRONG

- **Sponsor Remarks**
- **Federal Agency Questions/Comments**
- **State Agency Questions/Comments**
- **Local Agency Questions/Comments**
- **Public Comments**