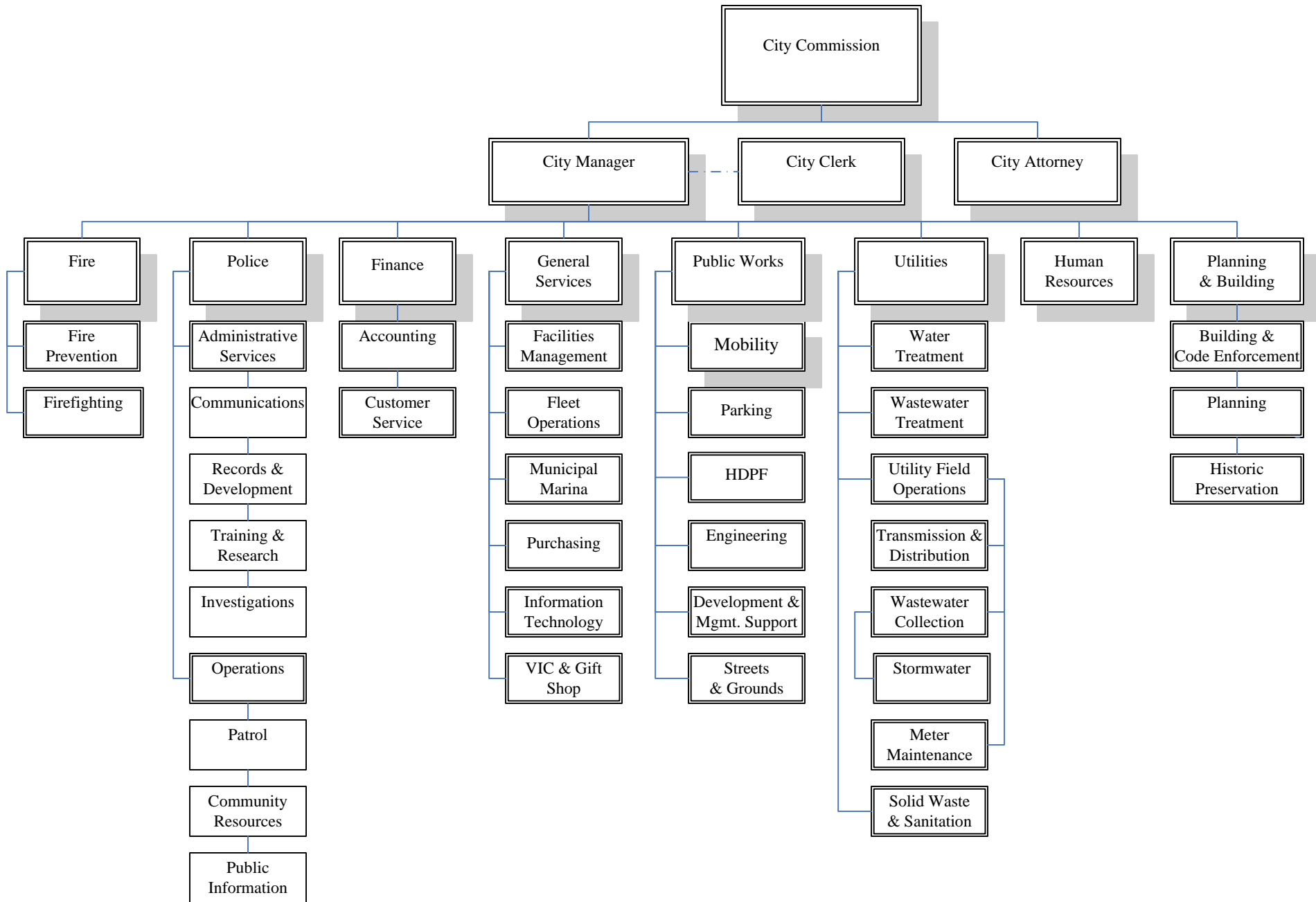
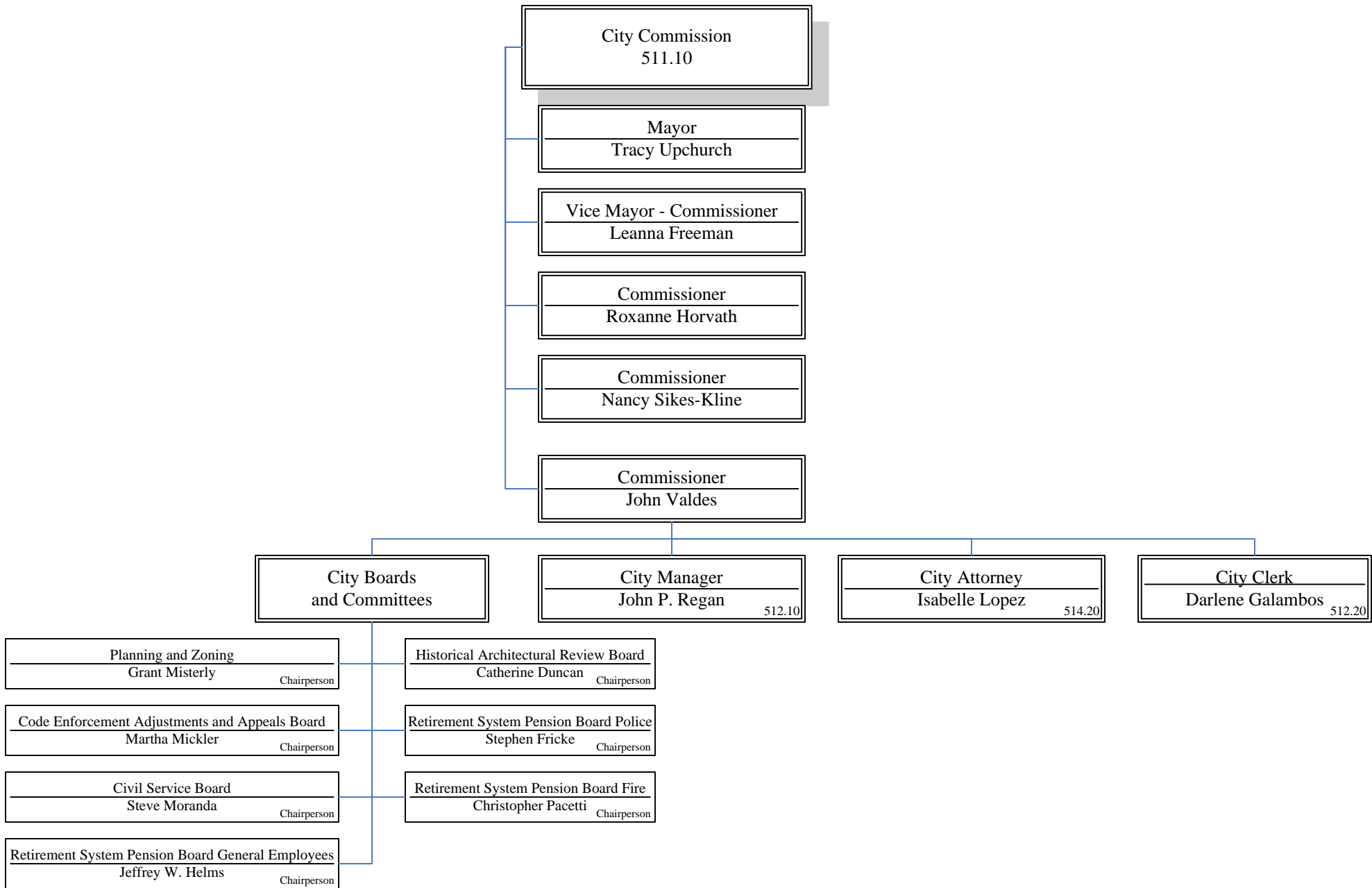
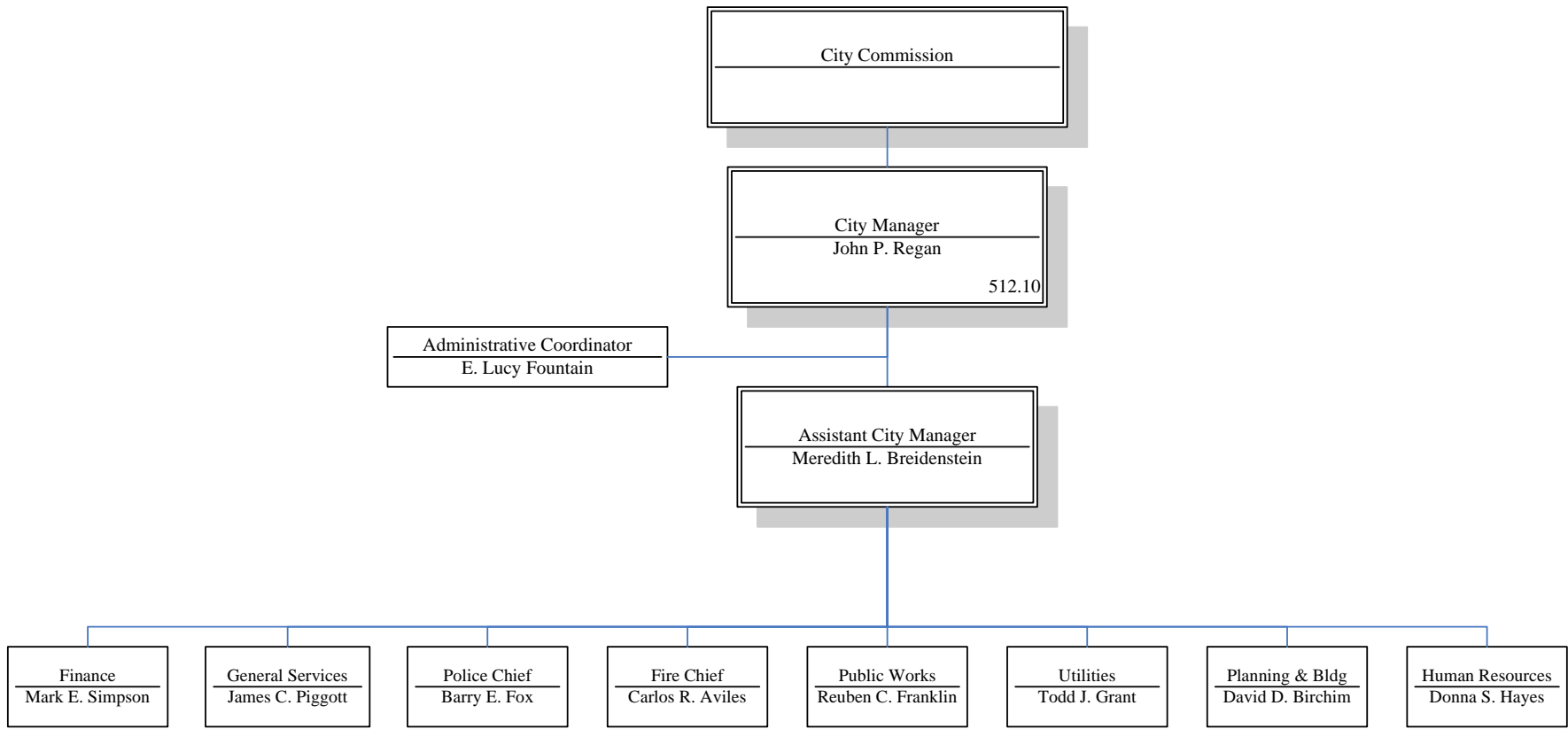


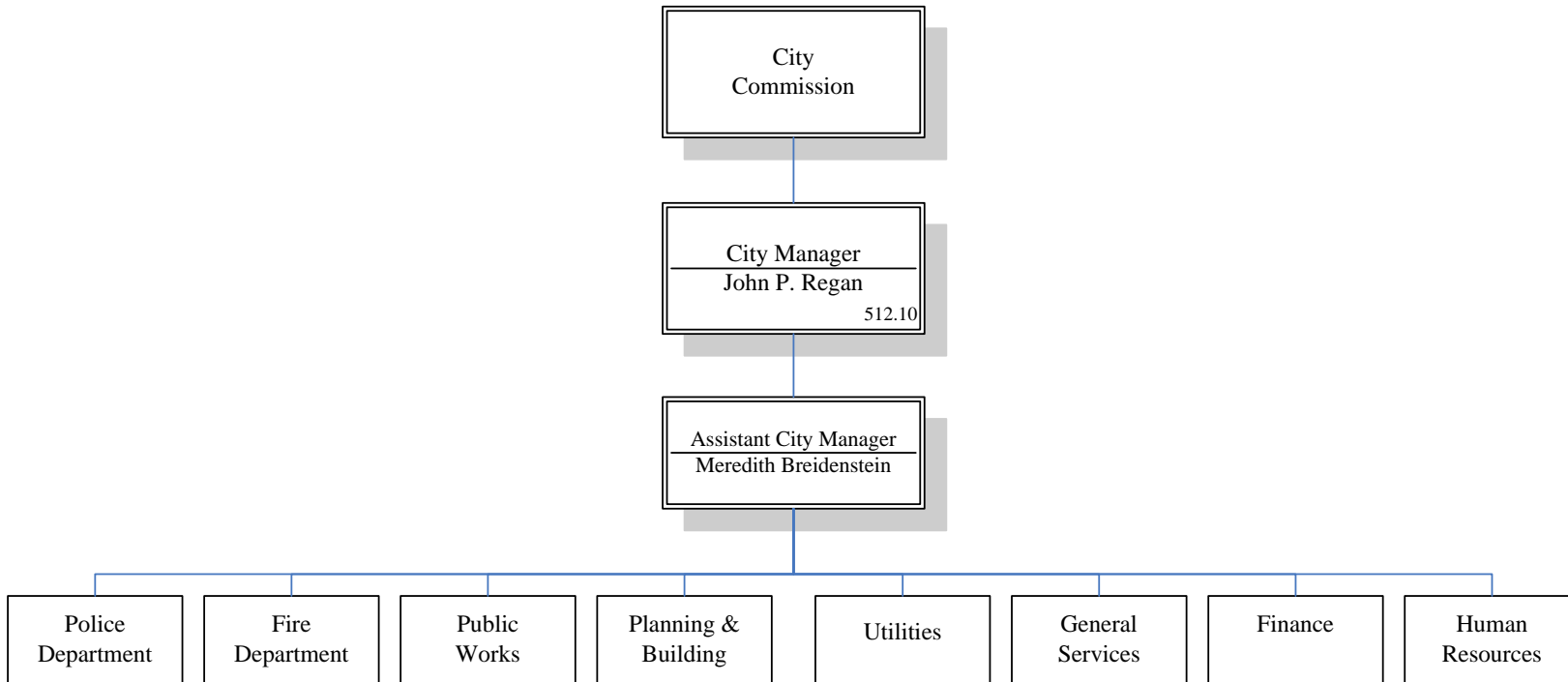
## Organization Charts

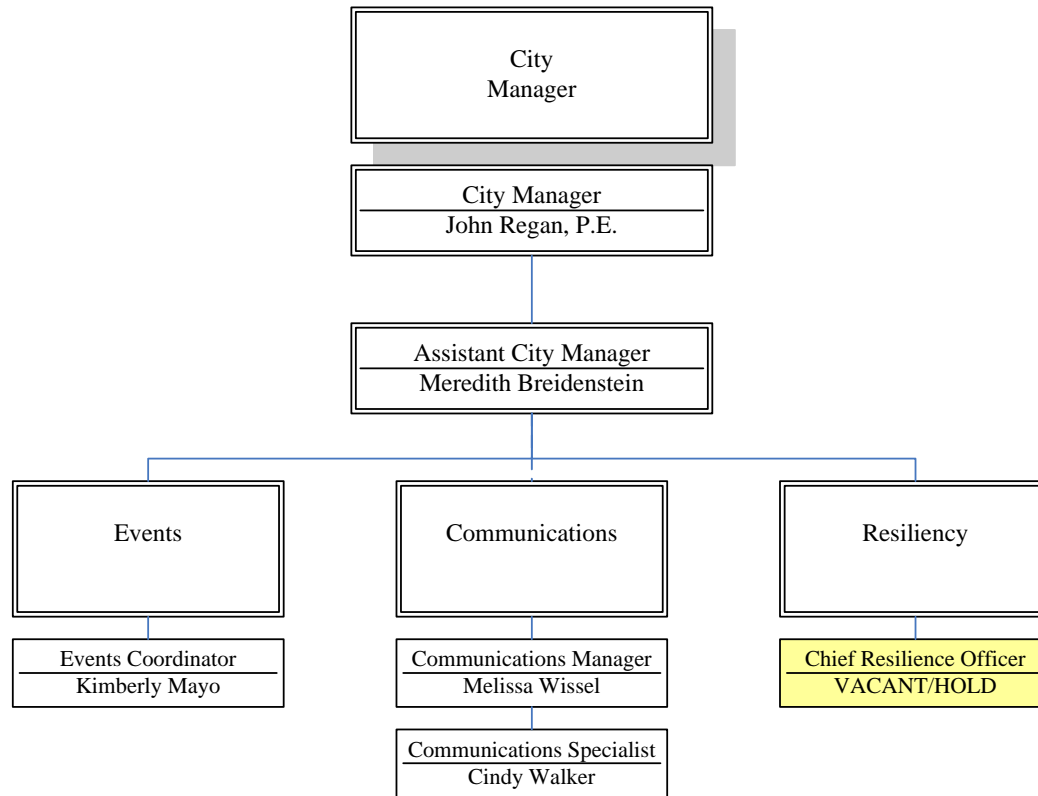
1. City Department & Division Overview
2. City Commission, Manager, Attorney, Clerk, & Boards
3. 3A. City Manager, Chief Officers, and Directors
- 3B. Departments under City Manager
- 3C. City Manager Divisions – Communications, Events, & Resiliency
4. Finance – Administration, Customer Service, and Accounting
5. 5A. General Services – IT, Fleet, Marina, and Purchasing
- 5B. General Services – Facilities Management Group – Facilities Operations & Property Services
- 5 C. Visitor Information Center
6. Fire Department
7. Planning and Building
8. 8A. Public Works Overview
- 8B. Public Works – Streets & Grounds
- 8C. Mobility, Parking Enforcement, & Parking Garage
- 8D. Public Works – Engineering & Development
9. 9A. Utilities Overview
- 9B. Utilities – Solid Waste & Sanitation
- 9C. Utilities – Treatment Plants, Environmental Compliance, & GIS
- 9C. Utilities – Transmission and Distribution, Wastewater Collection Systems, Stormwater and Meter Maintenance
10. Human Resources
11. Police Department
- 11A. Police Department Overview
- 11B. Police – Administrative Services & Investigation
- 11C. Police – Operations & Community Resources
12. City Clerk & City Attorney

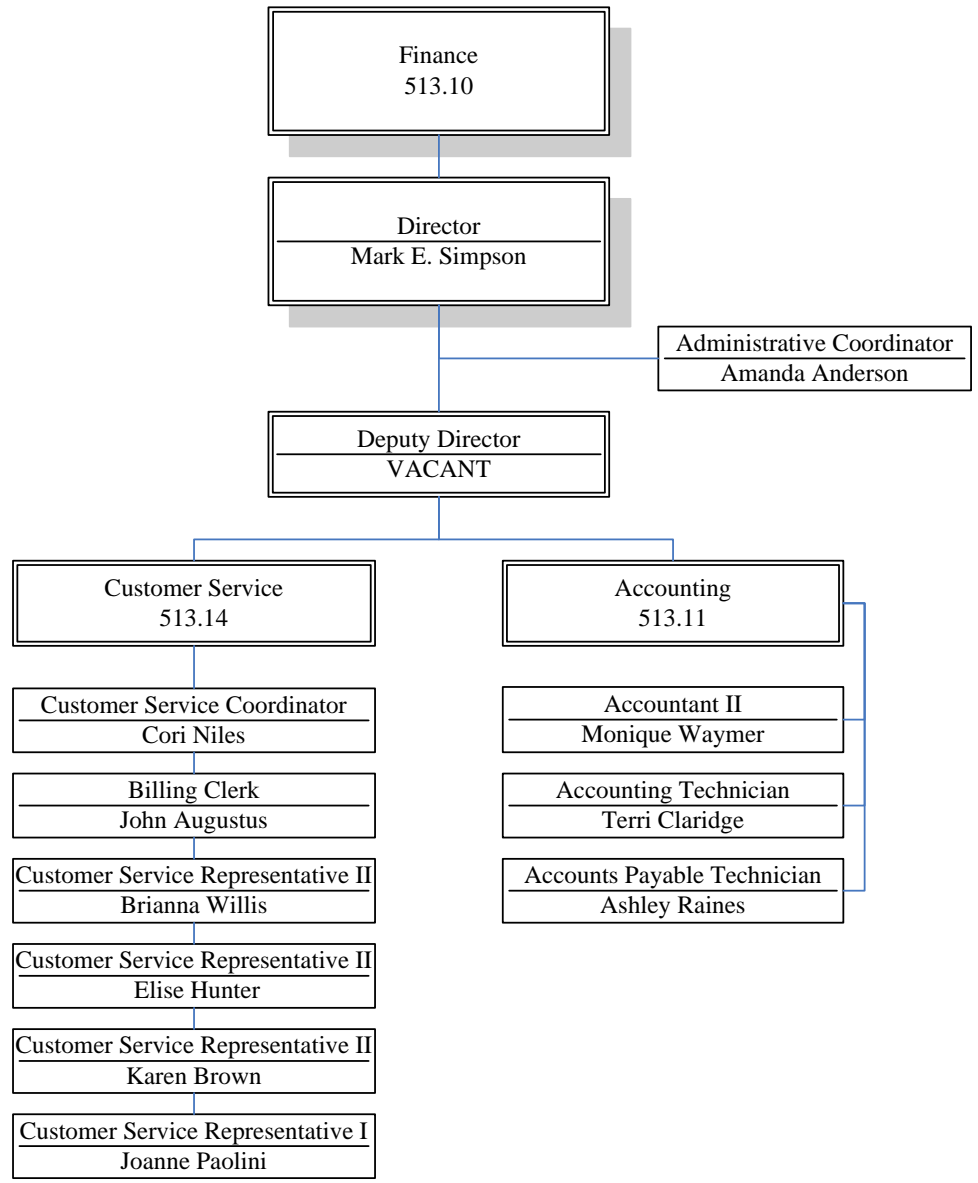


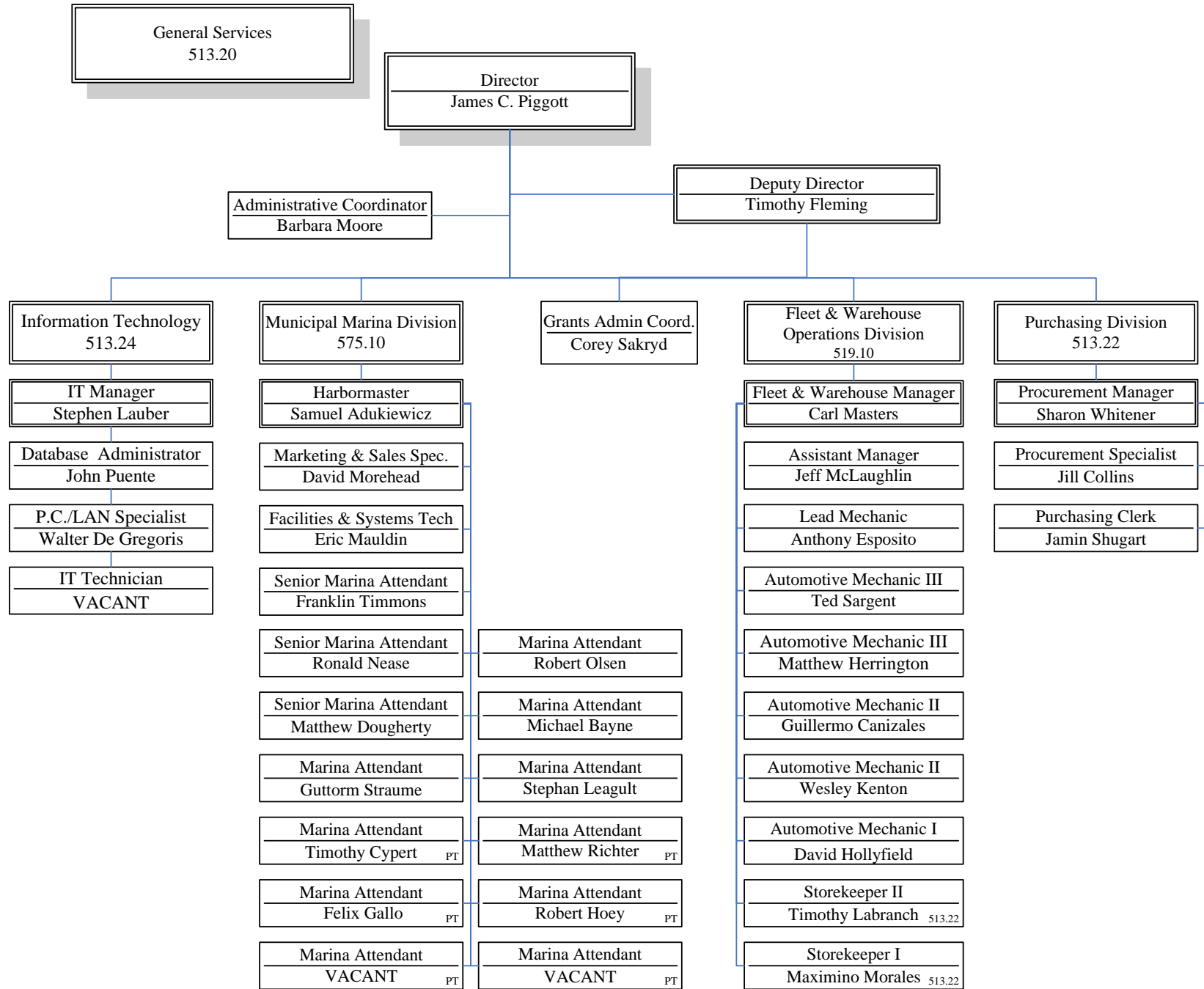




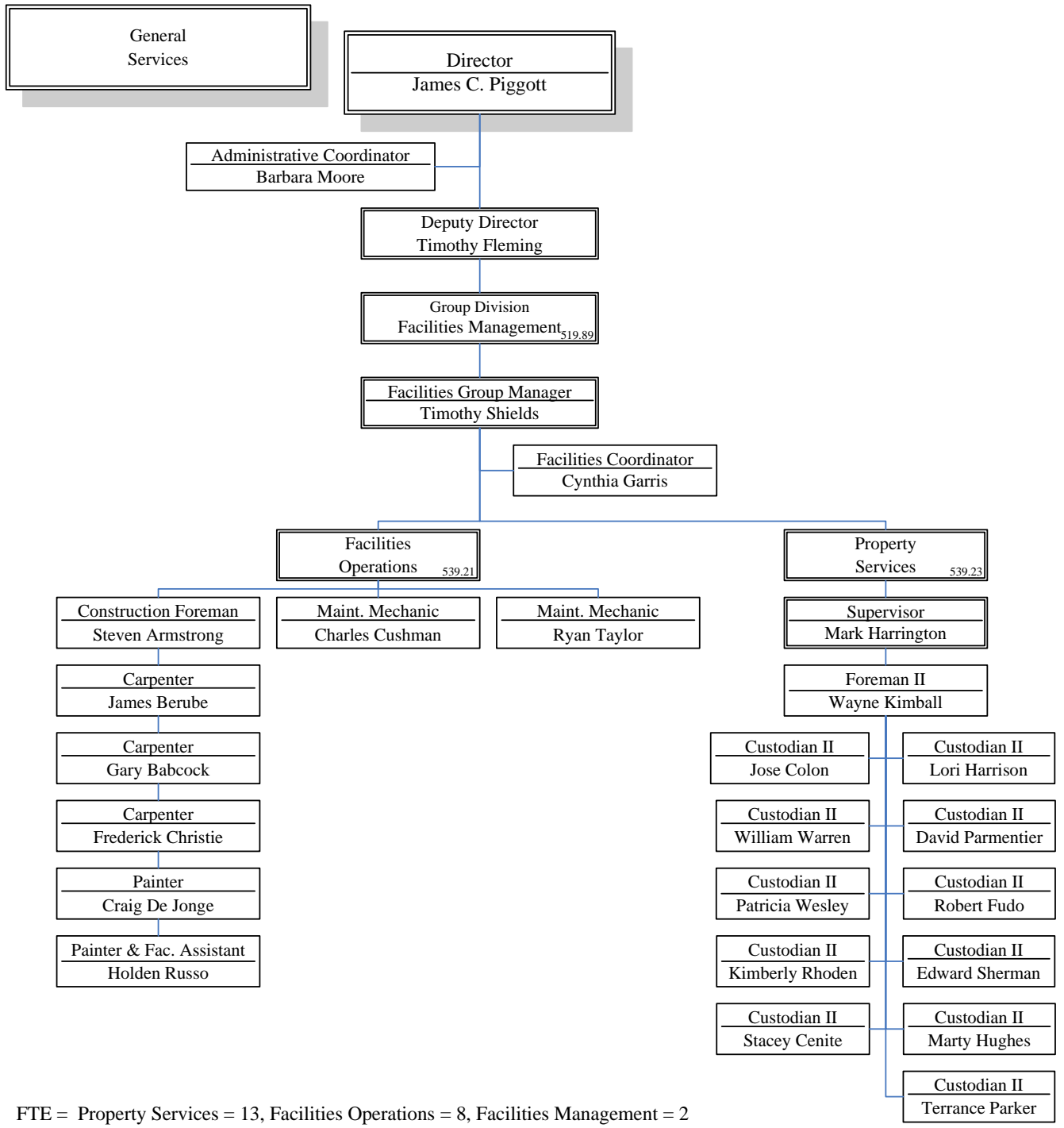




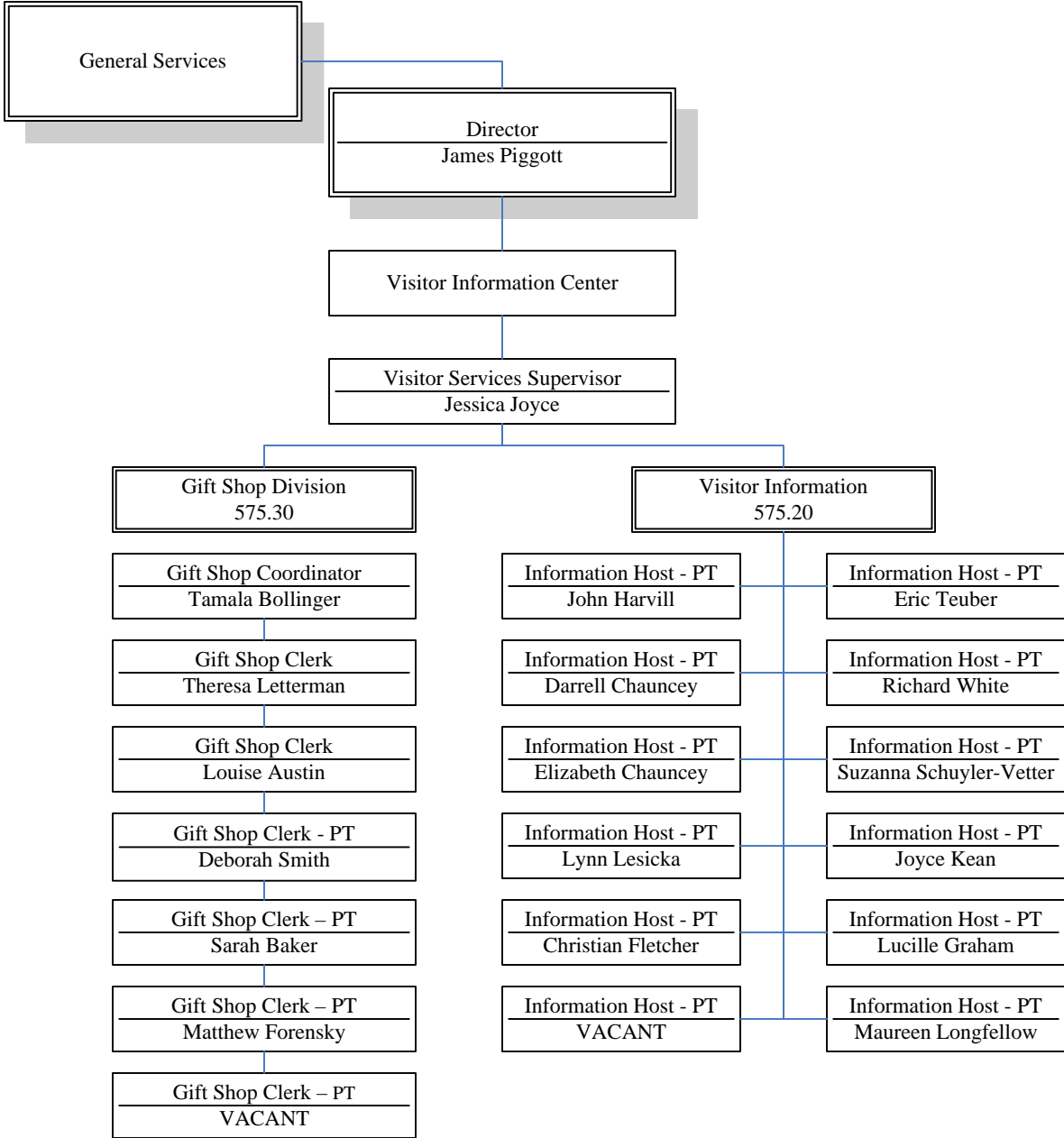


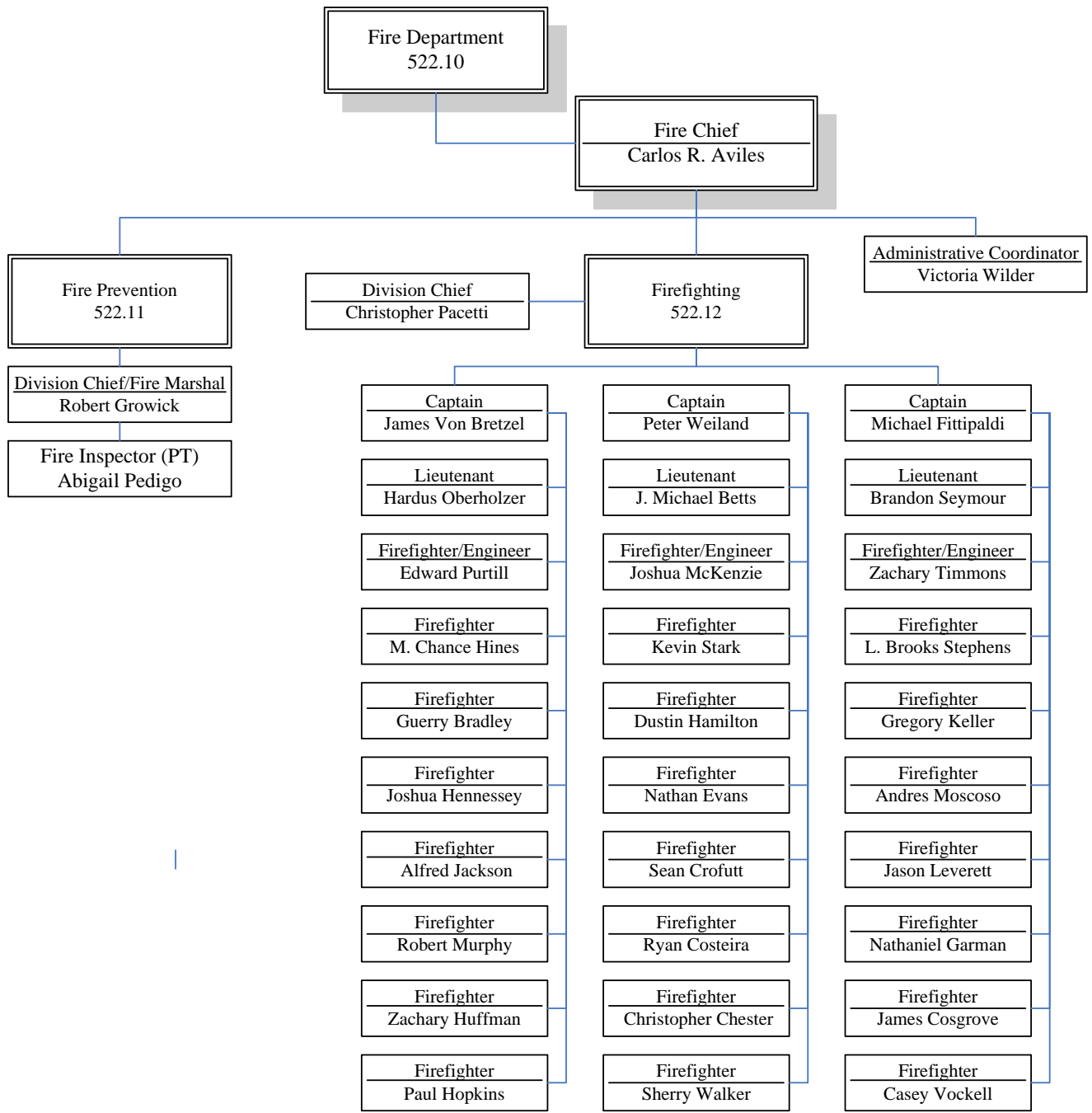


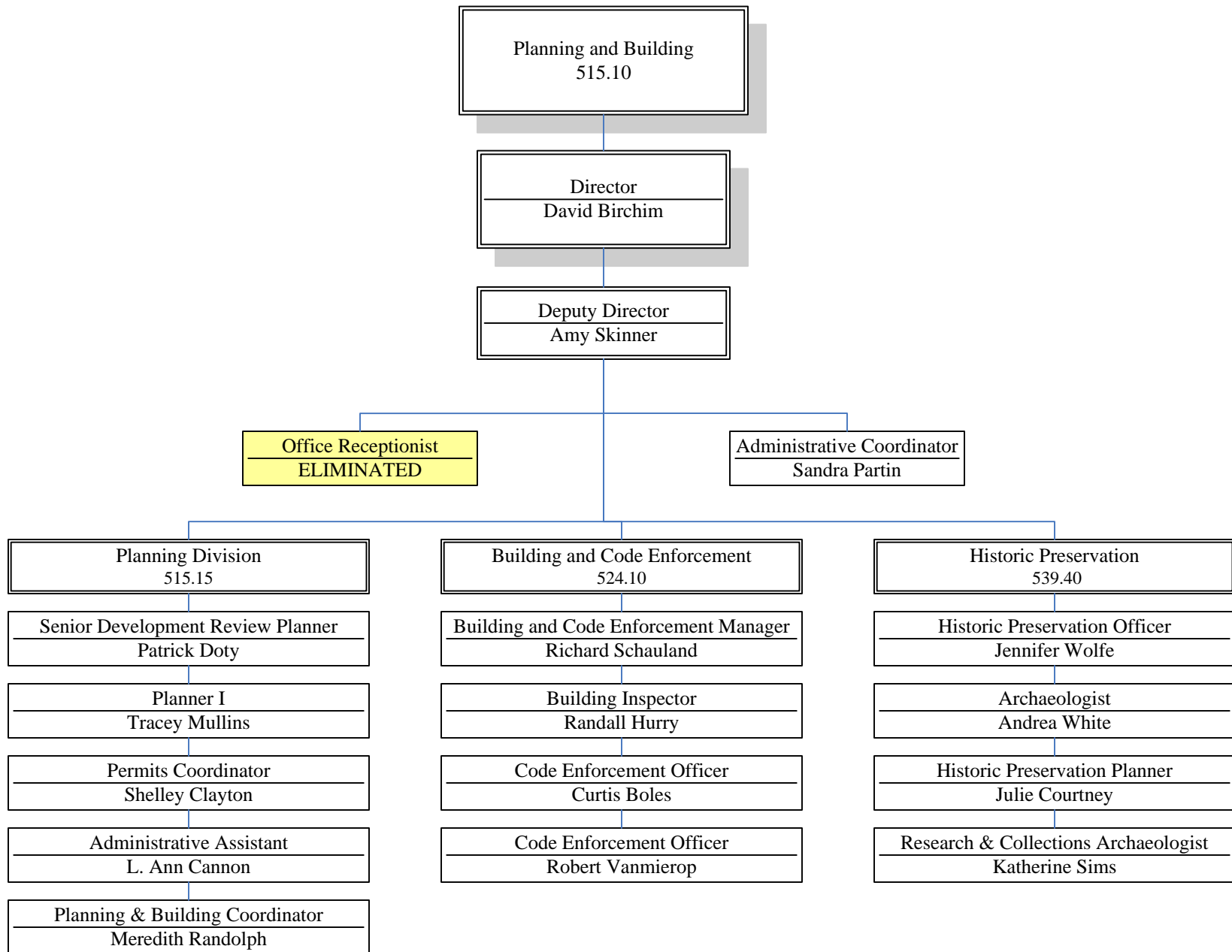


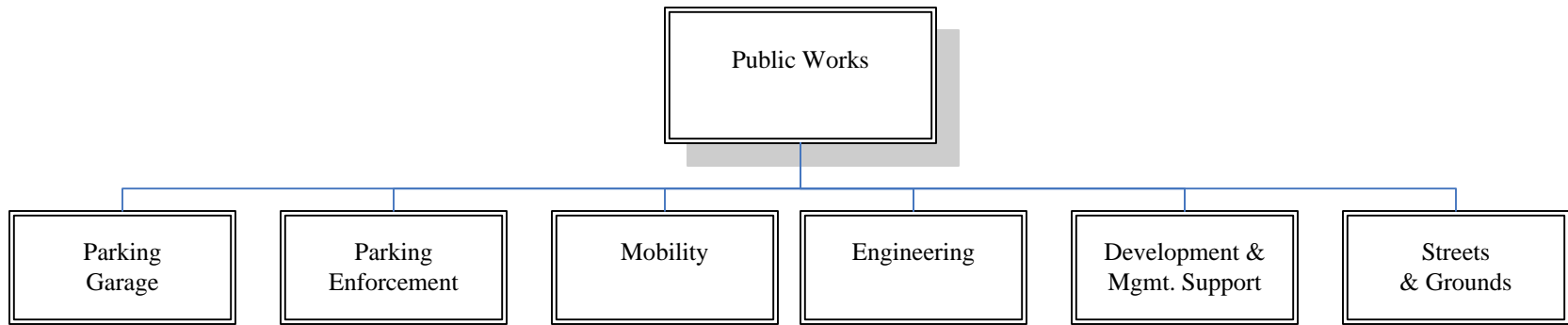


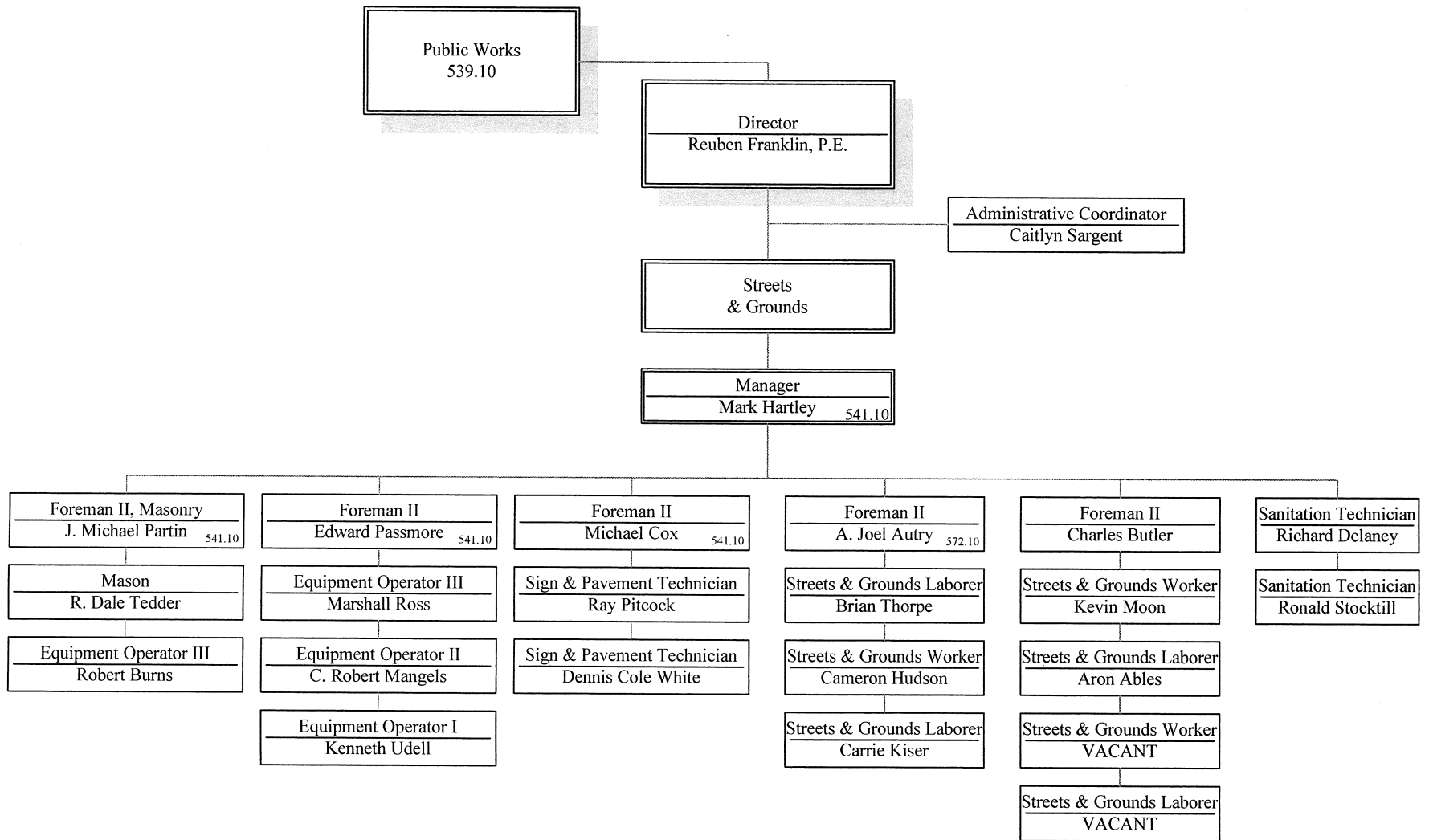
FTE = Property Services = 13, Facilities Operations = 8, Facilities Management = 2



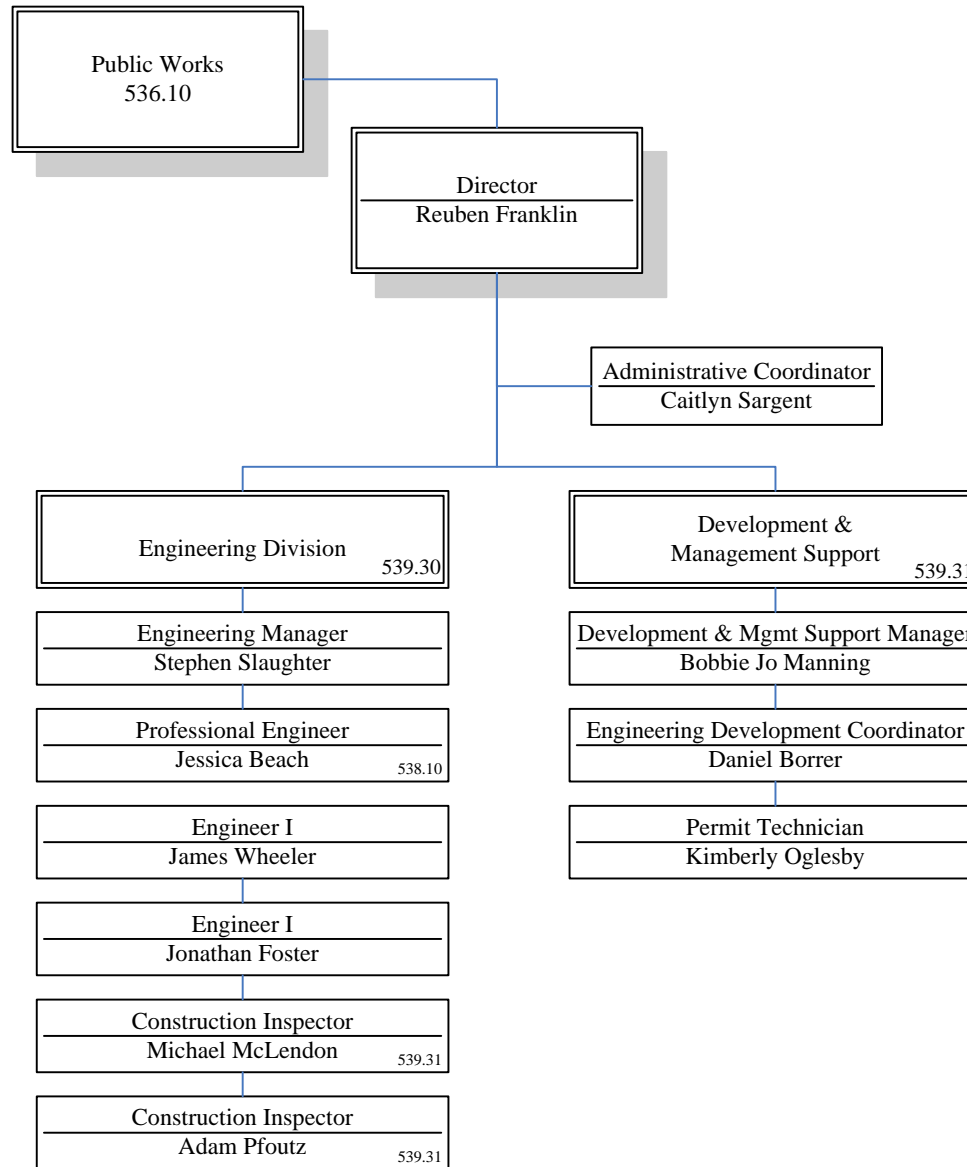


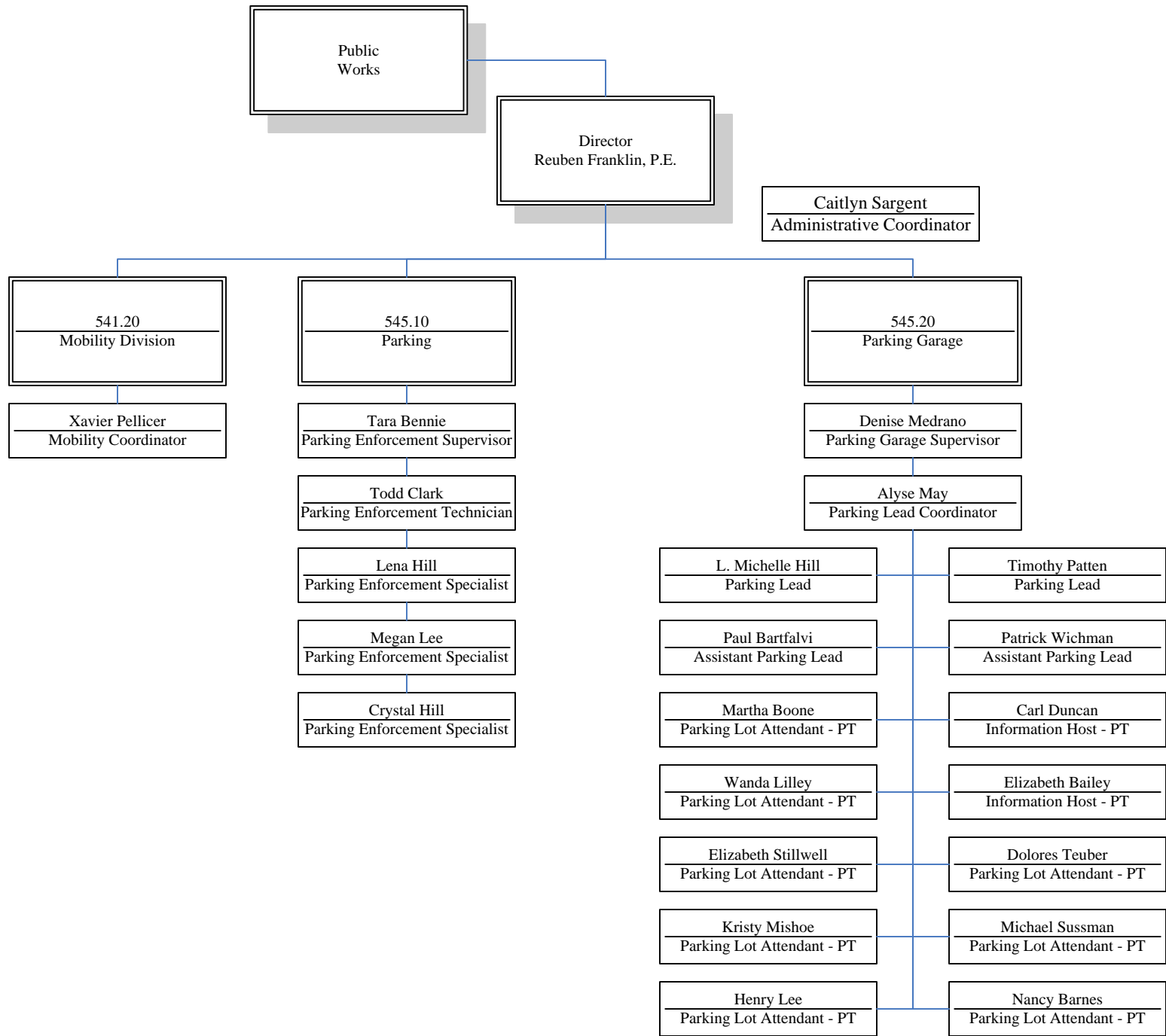




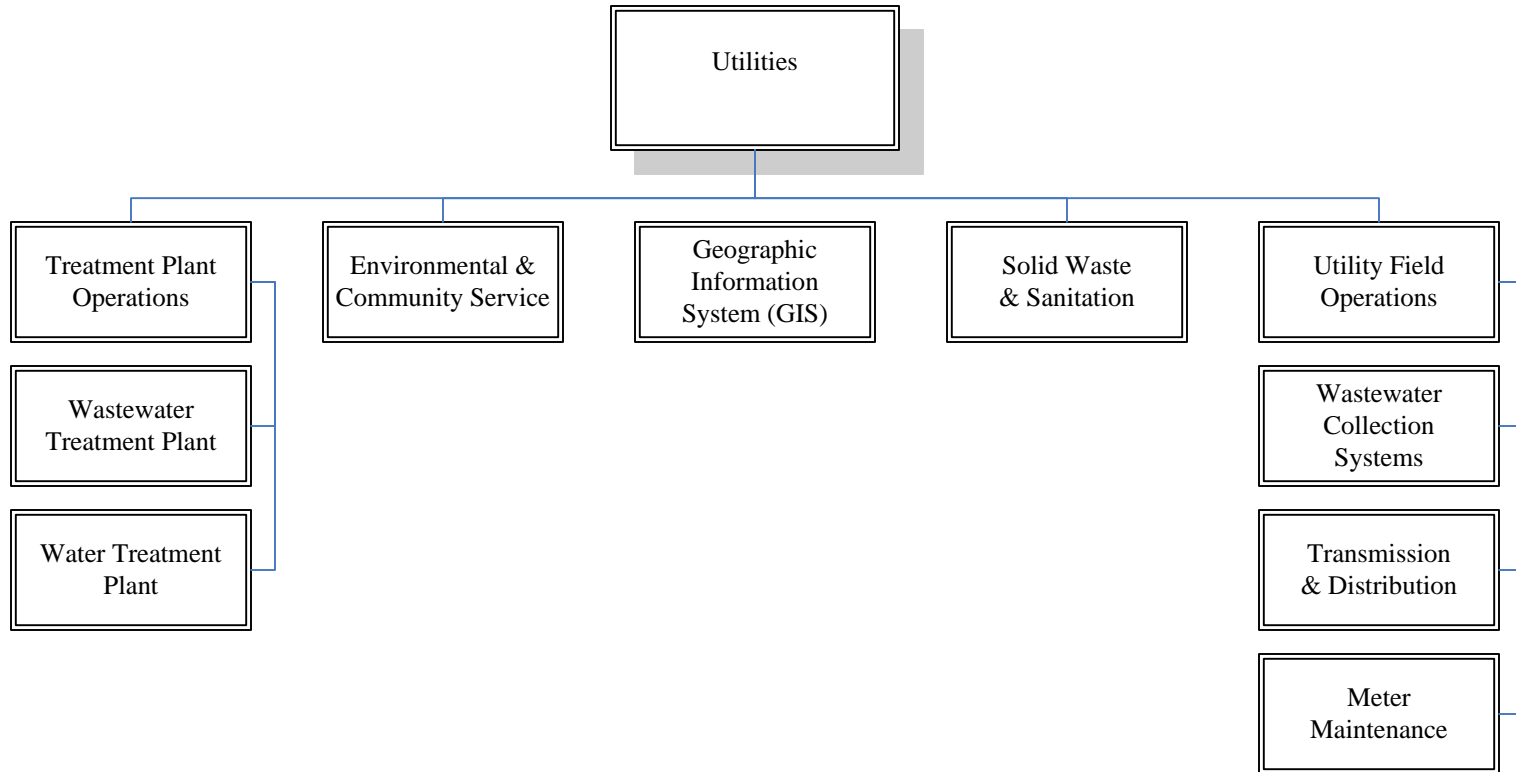


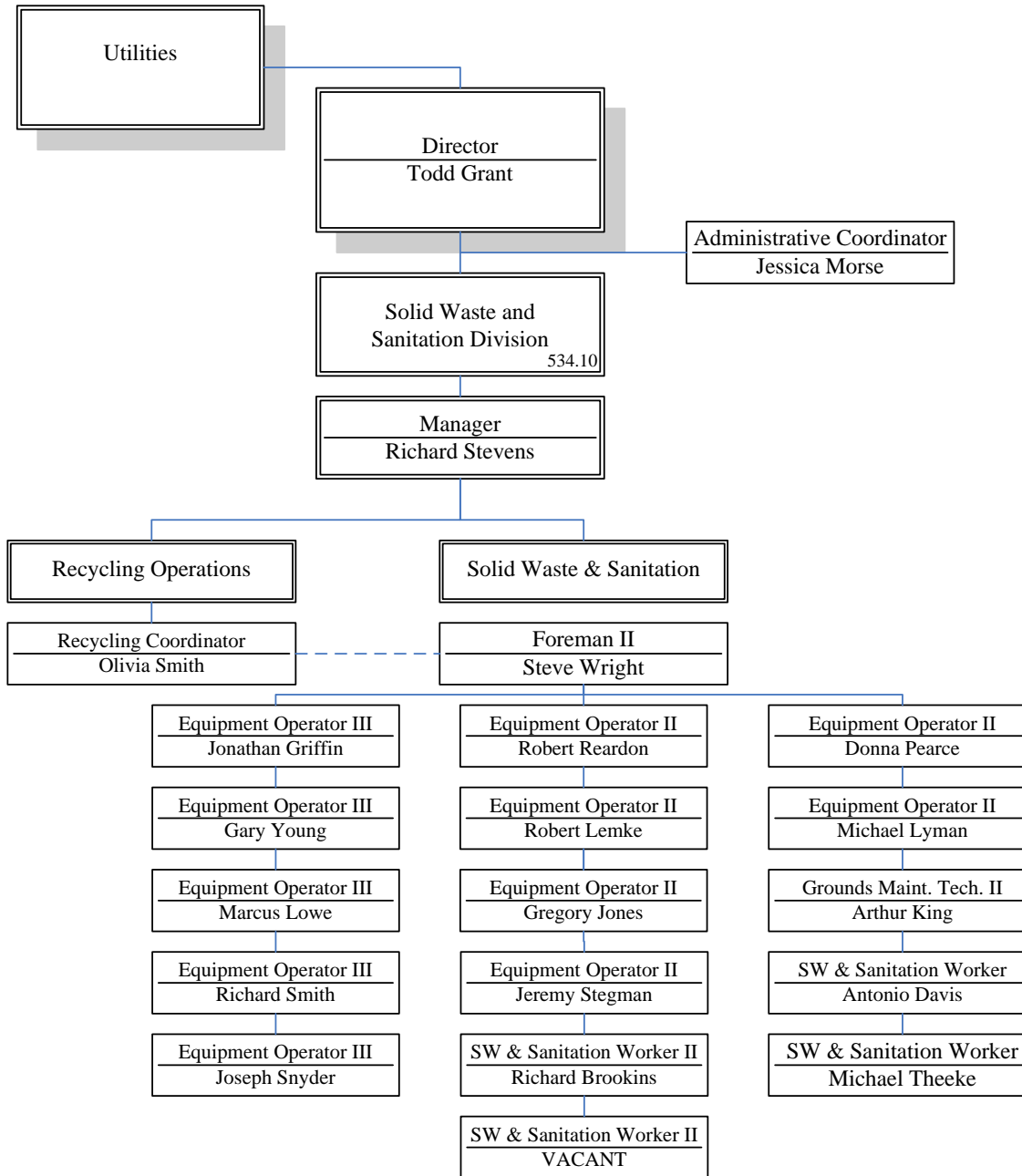
Streets & Grounds = 22 Public Works Admin = 2





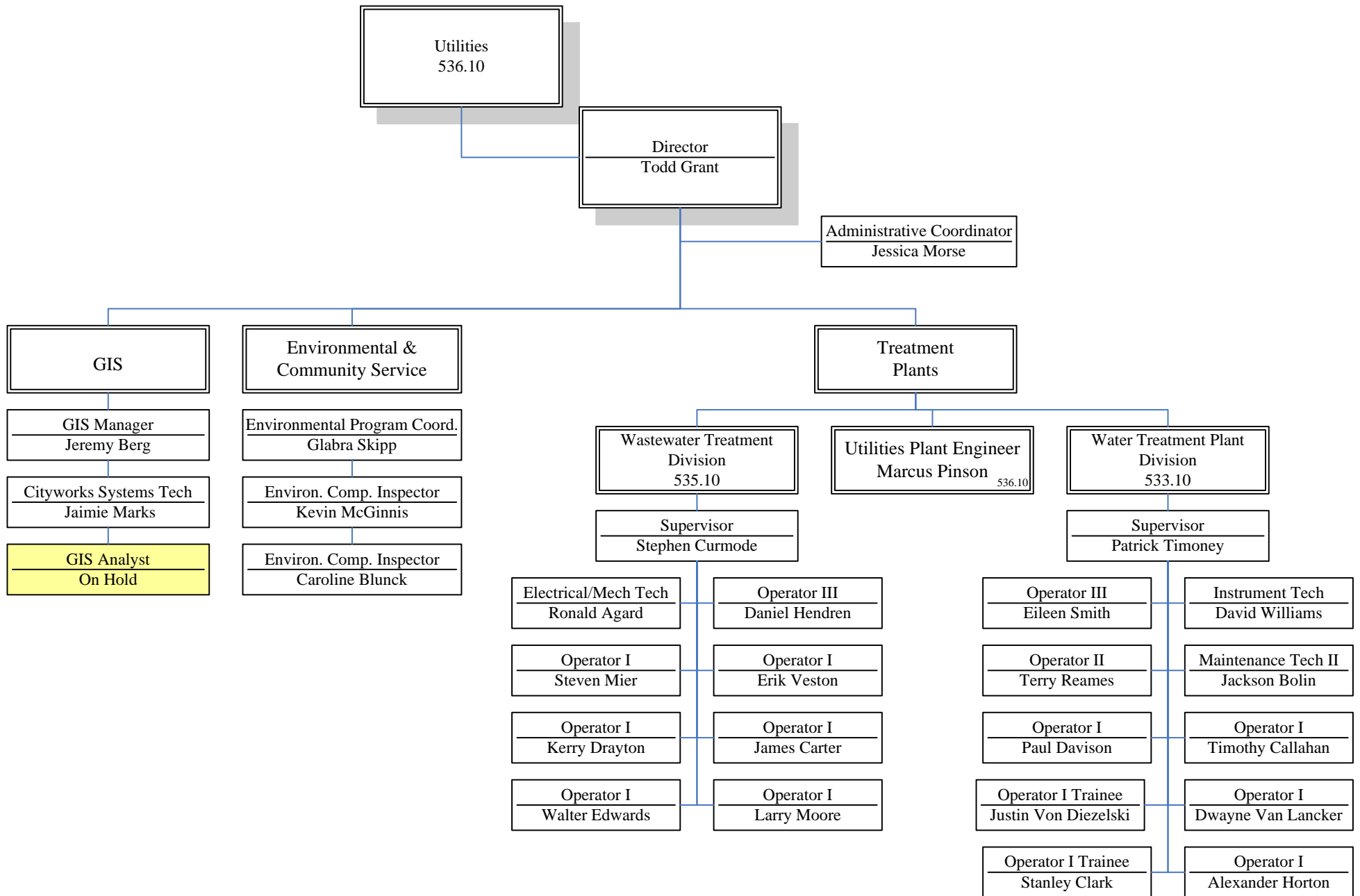




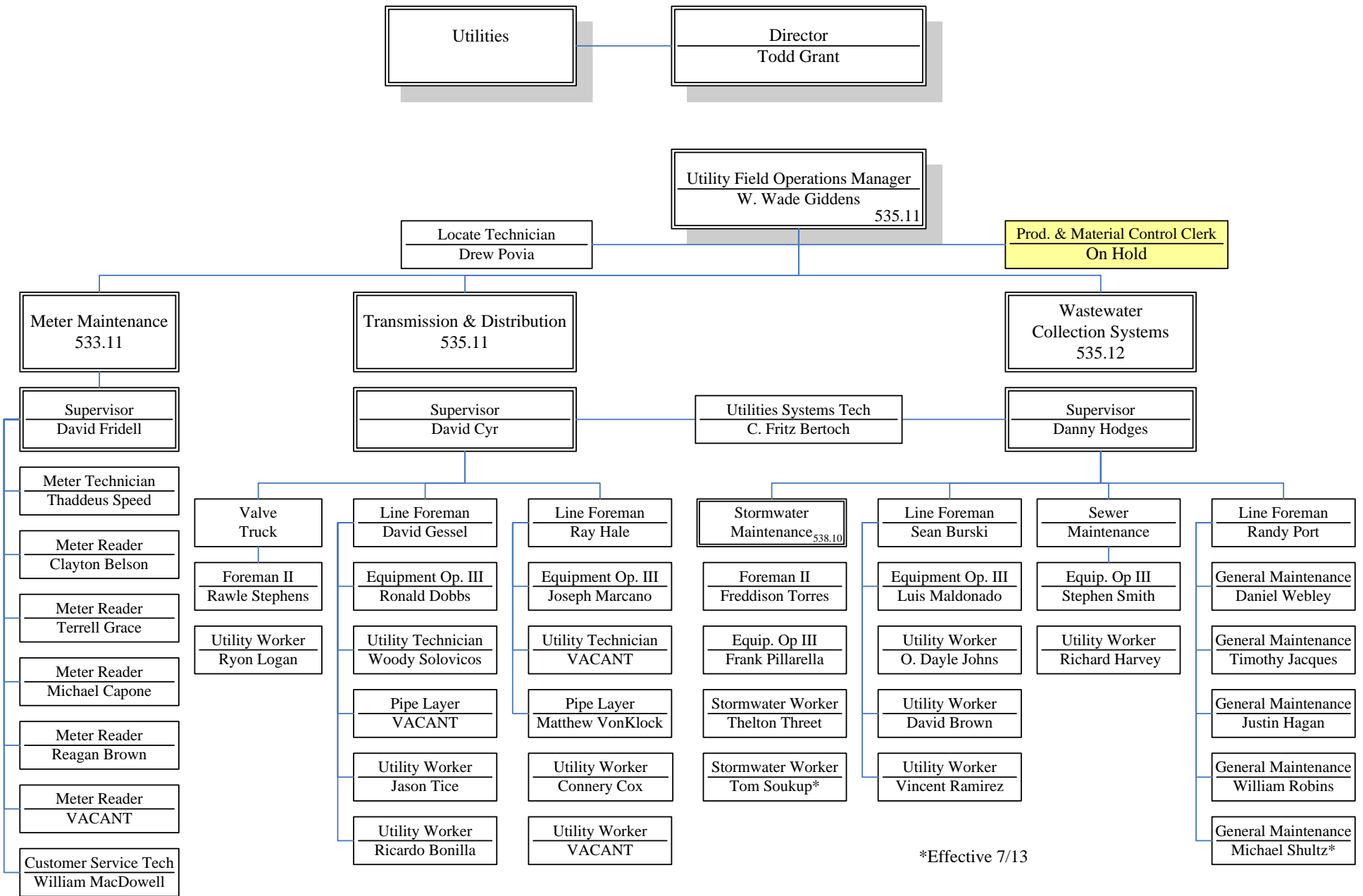


FTE: Solid Waste = 19

July 1, 2020

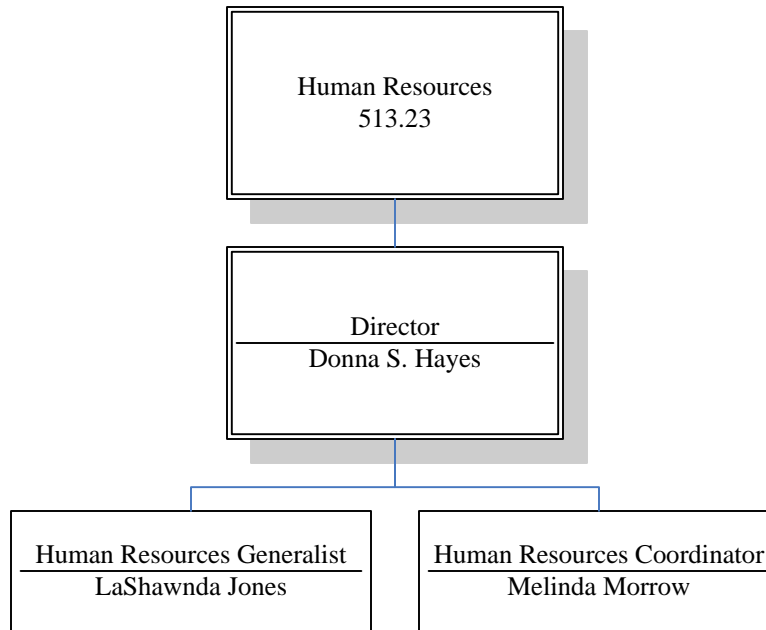


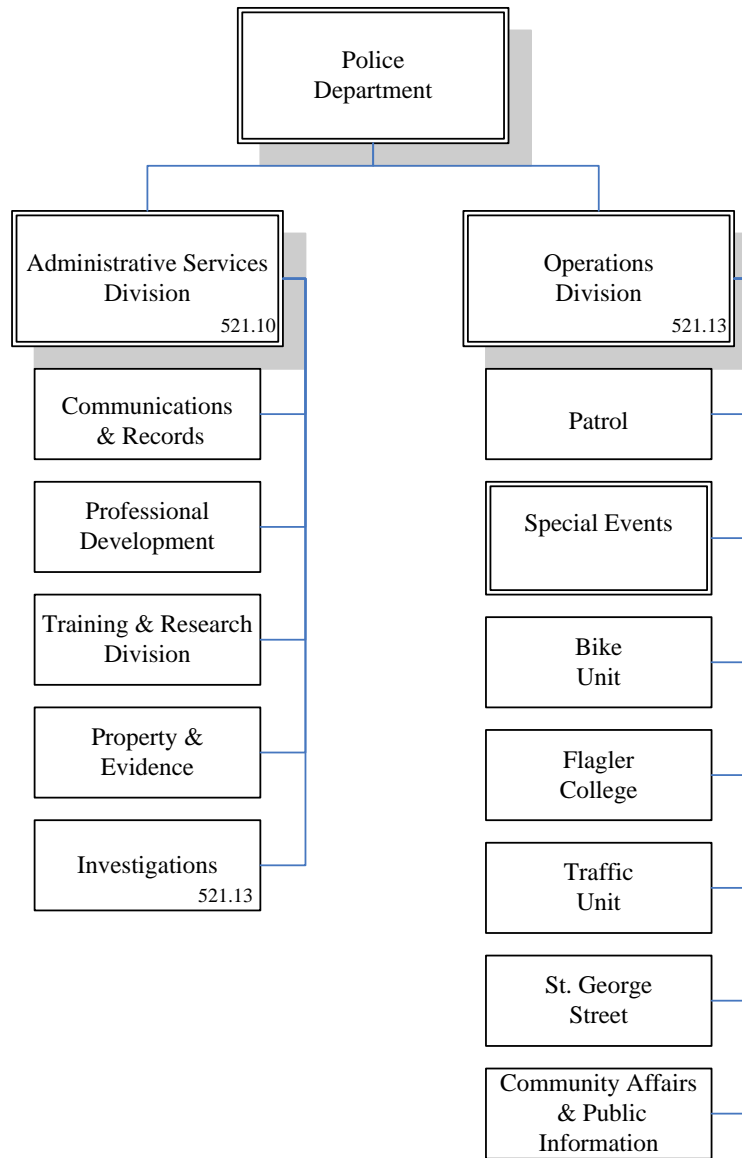
FTE: WTP = 11, WWTP = 9, GIS = 2 (counted in engineering), Utility Admin = 6

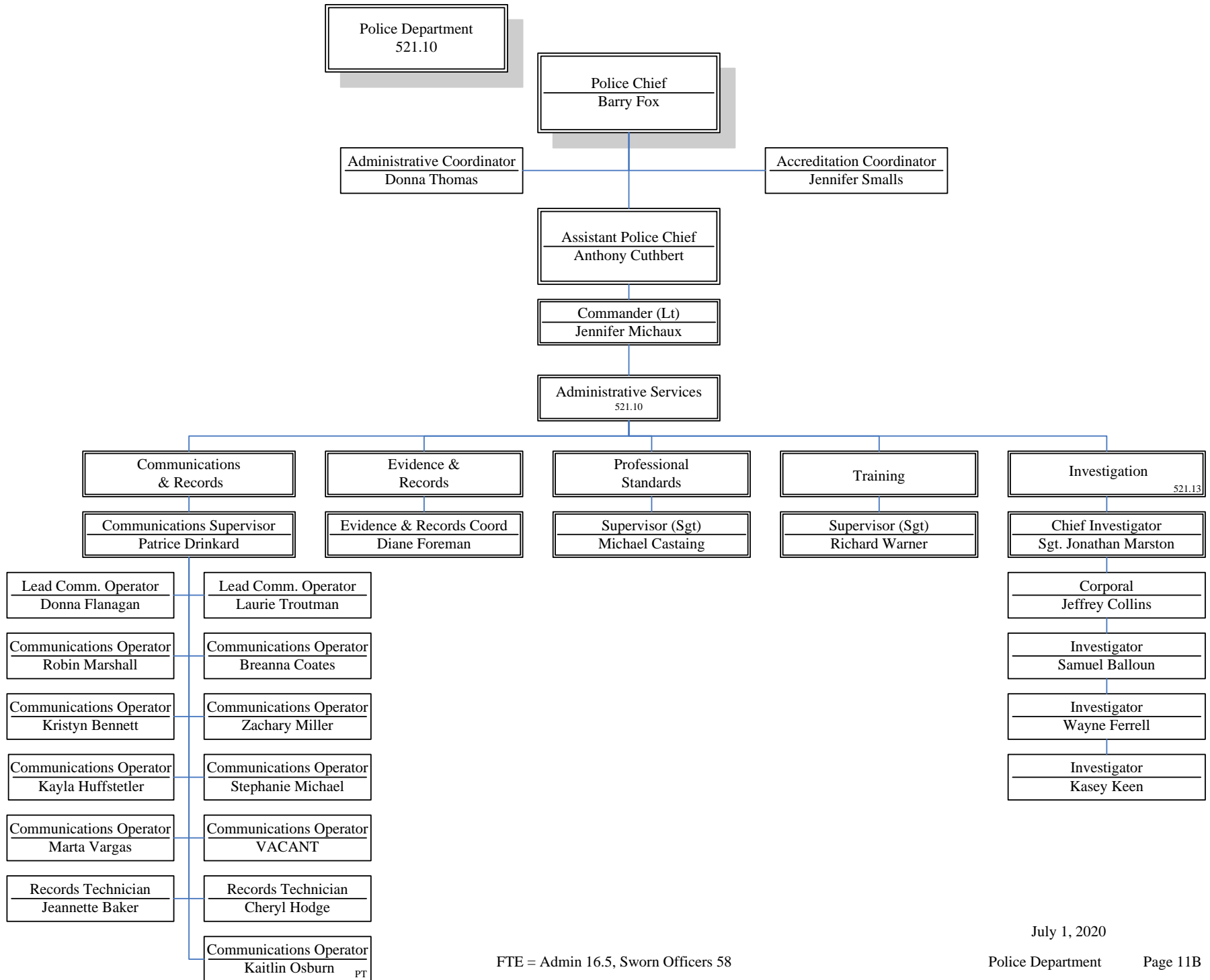


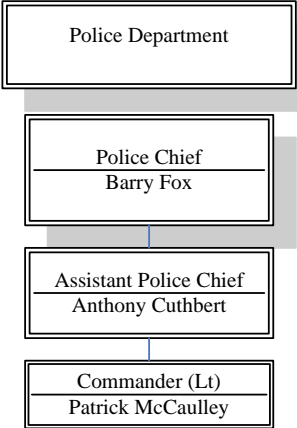
\*Effective 7/13

FTE = 45 Meter Maintenance = 8, T & D = 19, Wastewater Collection Systems = 14, Stormwater = 5 (includes engineer)

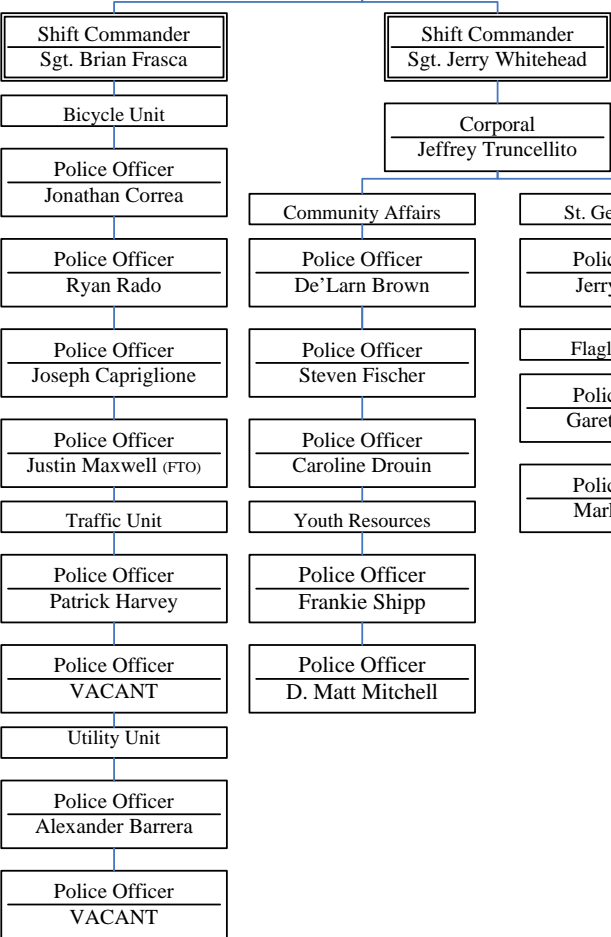








Special Events



Operations 521.13

