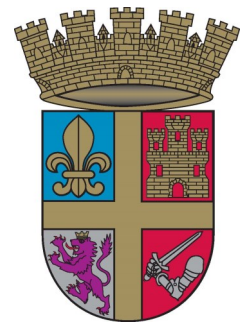


THE SOUTH DAVIS SHORES NEIGHBORHOOD ZONING WORKBOOK

A Guide to Creating Zoning Overlay Districts

The City of St. Augustine
Planning and Building Department



INSTRUCTIONS

This workbook is an educational resource regarding zoning, zoning overlay districts, and overlay adoption procedures. Each neighborhood can use this workbook as a toolbox to design their own zoning overlay district. This is an opportunity to express your concerns and desires for improvement in your neighborhood.

At the end of the document, you will see several **“Neighborhood Worksheets.”** Using the information provided in this workbook, as well as your own observations, answer the questions on these sheets to the best of your ability. Your answers will help your neighborhood, as well as city staff determine the specific characteristics of your neighborhood that should be encouraged through various planning tools, such as zoning overlay district.

Please contact Erin Minnigan with the City of St. Augustine at 904-209-4283 or eminnigan@citystaug.com, if you have any questions.

INTRODUCTION

St. Augustine's Zoning Code was adopted in April of 1975 and has not changed significantly since that time. Today, the City's zoning policies tend to be reactionary to new development and do not address existing land use issues. A new methodology could be created in which neighborhoods assess their unique character and specific needs, and then zoning is used to support those individual needs. This could potentially be accomplished through zoning overlay districts, which allow for the application of specific regulations to geographic areas. This workbook explains the concepts of zoning and zoning overlay districts, as well as the processes required to adopt and enforce district regulations. While the workbook does not include everything an overlay district needs in its final form, it acts as a starting point for St. Augustine's neighborhoods to outline the specifics they would want in a zoning overlay. The goal is for each neighborhood to use this document as a toolbox to reflect on their unique character, current concerns and desires, and design a solution that addresses their specific needs.

Workbook Goals:

- ♦ Define the neighborhood's characteristics
- ♦ Define the concerns and needs of the neighborhood
- ♦ Decide if a "zoning overlay district" is the correct solution to the neighborhood's issues
- ♦ Decide what types of boundaries and regulations the neighborhood would want for its zoning overlay district
- ♦ Suggest a timeline for the neighborhood's zoning overlay district adoption

GLOSSARY OF TERMS

- ◆ *Future Land Use:*

The Future Land Use Element of St. Augustine's Comprehensive Plan sets forth goals, objectives and policies to guide physical development. It states:

"To create an environment within the City and adjacent areas in which its residents have the opportunity to maximize the potential for economic benefit, and the enjoyment of natural resources, while minimizing the threat to health, safety, and welfare posed by hazards, nuisances, incompatible land uses, and environmental degradation." (St. Augustine Future Land Use Goal)

- ◆ *Zoning:*

The division of a municipality into districts (zones) with certain uses that are designated by the local government. These uses typically include a range of residential, commercial, and industrial properties. In addition, zoning stipulates other characteristics of development, such as building height, bulk, layout and setback.

- ◆ *Overlay District:*

A special zone that is placed over the base zoning and provides additional regulations that supplements or supersedes the existing regulations. Overlay boundaries are not required to coincide with other zoning district boundaries and tend to encompass specific areas, such as a neighborhood or commercial corridor.

- ◆ *Non-Conforming Land Use:*

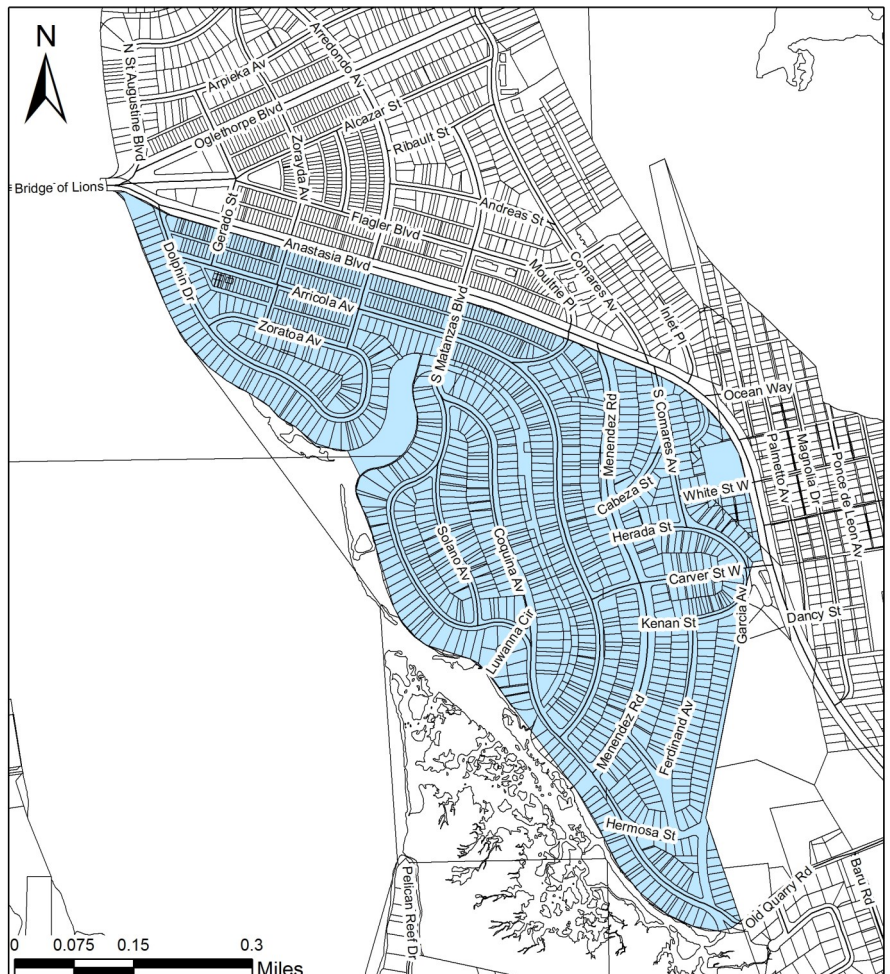
The use of a property that does not conform to the uses outlined in its zoning designation. If it was developed before our zoning was adopted in 1975, but has been used continuously since then, it is considered a *legal* non-conforming land use. If the property remains vacant at any time for 12 months it becomes an *illegal* non-conforming use. The City discourages the existence of non-conformities.

OVERVIEW OF THE SOUTH DAVIS SHORES NEIGHBORHOOD

Until the 1920s, this southwest corner of Anastasia Island was a vast, swampy lowland with occasional peaks of high ground. In the colonial period, this area served as a protective barrier to the struggling military outpost on the mainland. The settlers established a series of lookouts here, including a watchtower where Lighthouse Park is now located, to survey the sea for friendly vessels and enemy intruders. The island also provided an abundant building material, coquina, from a quarry that lies east of Escolta Creek. In 1740, General Oglethorpe of Georgia established a battery on high ground near the intersection of Oglethorpe Boulevard and Arredondo Avenue from where he unsuccessfully bombarded St. Augustine and the Castillo de San Marcos for twenty-three days.

When Spain ceded Florida to the United States in 1821, this undeveloped lowland became federal property. In 1855, the State of Florida, through an Internal Improvement Fund, acquired it for the purposes of encouraging and promoting the development of unproductive lands. For such reasons, the marshland on north Anastasia Island was granted to public transportation firms. From 1858 to 1907, the bulk of Davis Shores area was owned by the St. Johns Railway Co., the Florida East Coast Railway Co., and the St. Augustine and South Beach Railway and Bridge Co. Two officers of the latter company, H.J. Ritchie and M.R. Bean, were promoters of the then developing Lighthouse Park area and were instrumental in establishing a trolley service across the mudflats to the beachfront community of “Anastasia.” A small section of the Davis Shores area, the section immediately north of Escolta Creek, was granted to the Florida Coast Line canal and Transportation Company in 1885 as state compensation for the company’s plans to dredge an inland waterway from north Florida to the Keys. The Canal Company held this land until 1913. From 1907 to 1925, the bulk of the Davis Shores area was owned by the St. Johns Electric Company. In 1922, the company allowed a fifty foot causeway to be constructed through its property so that Anastasia Boulevard could be connected to the planned Bridge of Lions.

Two events within the next three years permanently altered the future of the marshlands. In 1923, the northern portion of Anastasia Island was incorporated into the City, and two years later, wealthy Florida land developer, D.P. “Doc” Davis, purchased all of the lowlands and proceeded to raise the land by a massive dredge and fill operation. Davis Shore Subdivision, plated in late 1925 and early 1926, was to be a planned community, but the Florida Land bust of 1926 ended Davis’ dream. Although many lots were sold, only eleven Mediterranean Revival structures were built: six houses, four apartments, and a office for the Davis Corporation. In 1927, the newly-completed bridge led to a largely vacant area. Not until the prosperous post-World War II years did Davis Shores witness the rapid growth that Davis foresaw decades earlier.



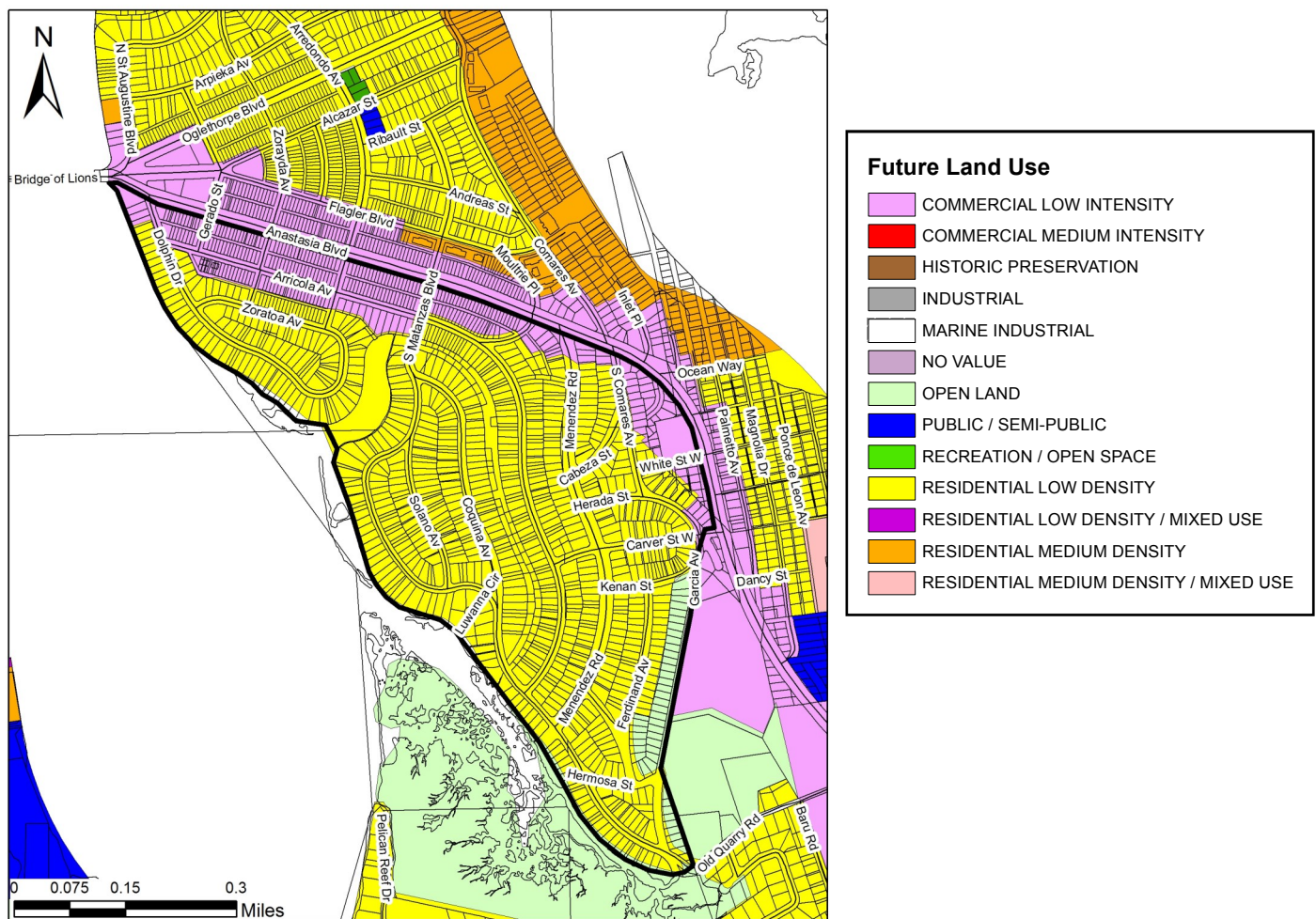
DISCLAIMER: This map is for reference only and is not to be constructed as a survey or legal document. Data provided are derived from multiple sources with varying levels of accuracy. The City of St. Augustine disclaims all responsibility for the accuracy or completeness of the data shown hereon.

FUTURE LAND USE ANALYSIS

Definition of Future Land Use:

The Future Land Use Element of St. Augustine's Comprehensive Plan sets forth goals, objectives and policies to guide physical development. Zoning lies on top of future land use and must be consistent with that future use. While zoning stipulates the specific uses and extent of development allowed, future land use generally outlines the character of each zone, including the intended intensities and densities of developable land. The purpose of designating future land uses is to create an environment in which the City's residents have the opportunity to maximize the potential for economic benefit and the enjoyment of natural resources, while minimizing the threat to health, safety and welfare posed by hazards, nuisances, incompatible land uses, and environmental degradation.

Future Land Use Map of South Davis Shores



DISCLAIMER: This map is for reference only and is not to be constructed as a survey or legal document. Data provided are derived from multiple sources with varying levels of accuracy. The City of St. Augustine disclaims all responsibility for the accuracy or completeness of the data shown hereon.

ANALYSIS OF COMPREHENSIVE PLAN COMPLIANCE

Changes to the City's zoning, including the establishment of zoning overlay districts, are adopted by ordinance as an amendment to Chapter 28 (Zoning) of St. Augustine's Code of Ordinances. An ordinance is an official legislative action by a governing body, which action is a regulation of a general and permanent nature and enforceable as a law. This legislation must be consistent with the City's comprehensive plan, and should specifically address and support future land use.

Here is an overview of the relevant Comprehensive Plan Policies and Future Land Uses that exist in South Davis Shores:

- ◆ **Future Land Use Policy 1.3:** The City shall maintain the following densities and intensities of land use for the Future Land Use classifications indicated. These densities and intensities shall be implemented by zoning district regulations adopted in the City Code and shall apply to all new development and all redevelopment in the City. Calculations of densities and intensities of use are based on net developable land, not gross acreage. Developable land includes all land contained within the boundaries of a parcel except lands within a public right-of-way; marshlands, swamps, or other environmentally sensitive lands where local, State, or Federal regulations otherwise prohibit development; and natural or man-made bodies of water such as ponds, lakes and reservoirs.

⇒ **Residential Low Density:**

This district is intended to apply to those neighborhoods designated for single-family dwellings and single-family type uses, as well as those uses compatible with low density single-family uses such as churches, child care centers, etc., so as to create and maintain a stable low intensity residential character. Schools may be permitted in this district if it is determined via public hearing that they are compatible with the existing neighborhood and adequate ingress and egress exists. In addition, the City shall encourage, to the maximum extent possible, the location of schools in conjunction with public facilities such as parks, libraries and community centers; however, the actual location of schools will be based on a collaborative effort by the School Board and the City based on principles and guidelines.

⇒ **Residential Medium Density**

This district is intended to apply to those neighborhoods designated for multiple-family dwellings and uses, as well as those nonresidential uses compatible and complementary with medium density residential uses, so as to create and maintain a diverse medium intensity residential character.

⇒ **Commercial Low Intensity**

This district is intended to apply to areas where small groups of low intensity commercial uses may be appropriately located to serve within convenient traveling distance from one (1) or several neighborhoods. The district is not intended for use by medium intensity commercial uses such as service stations, vehicle repair and sales, etc. but low traffic generating commercial uses are encouraged. In addition, professional and business offices, compatible tourist accommodations and similar uses are encouraged.

- ◆ **Future Land Use Objective 3:** Reduce uses which are inconsistent with the Future Land Use plan. The measureable target for this objective is the number of nonconforming uses citywide as measured by the land use and building condition survey.

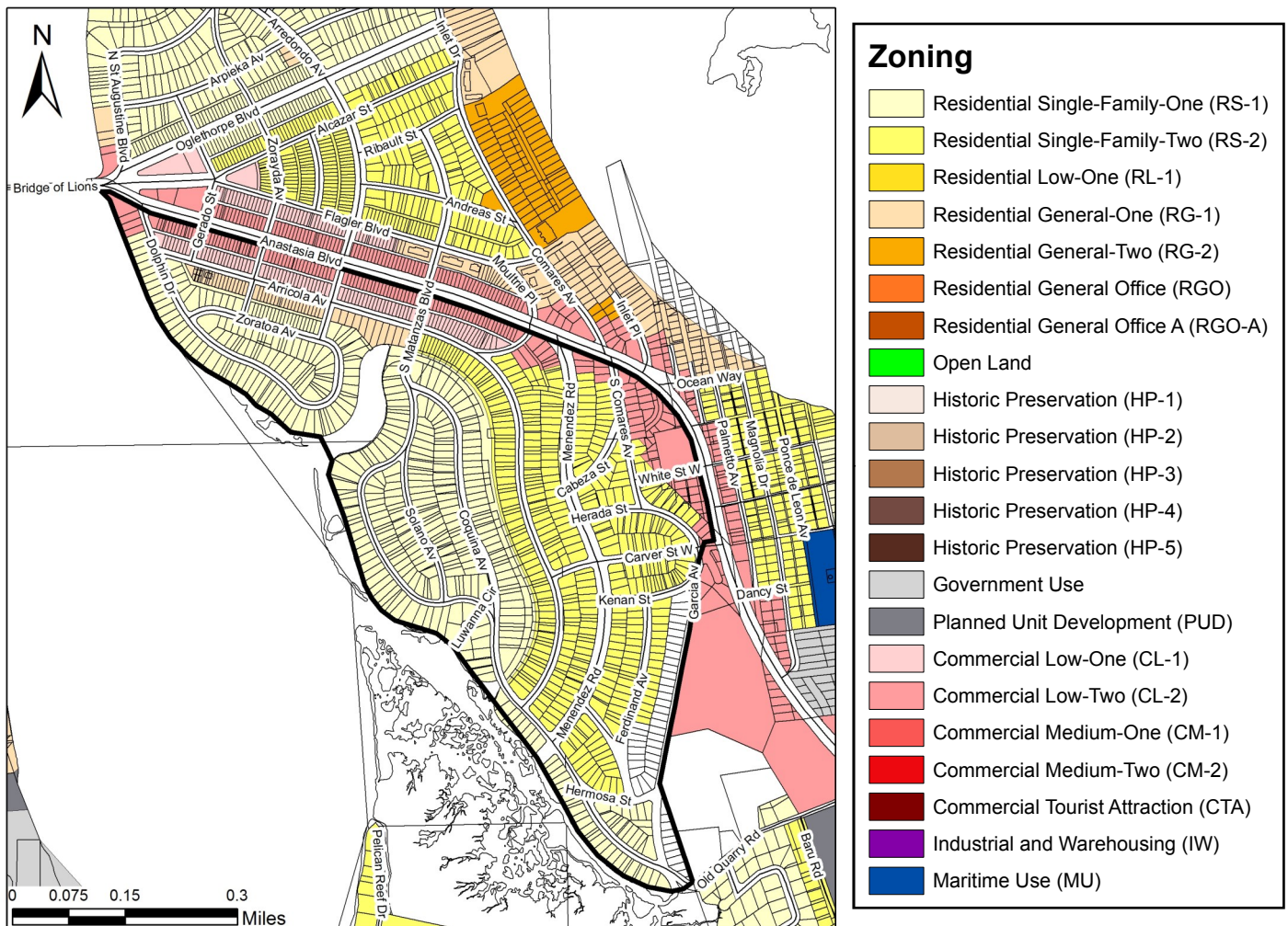
- ⇒ **Future Land Use Policy 3.1:** Identify existing nonconforming land uses in all areas of the city, including the coastal high hazard area and coastal planning area, during the land use and building condition survey conducted every five years. Continue to enforce the existing provisions of the City Code related to discouraging and phasing out existing nonconforming uses.

ZONING ANALYSIS

Definition of Zoning:

Zoning is the division of a municipality into districts (zones) with certain permitted uses that are designated by the local government. These uses typically include a range of residential, commercial, and industrial properties, which for the most part are separate from each other, but are uniform within each zone. In addition, zoning stipulates other characteristics of development, such as building height, bulk, layout, and setback. The philosophy behind zoning is to separate different, incompatible property uses, so that the health, safety and welfare of the public may be protected.

Zoning Map of South Davis Shores



DISCLAIMER: This map is for reference only and is not to be constructed as a survey or legal document. Data provided are derived from multiple sources with varying levels of accuracy. The City of St. Augustine disclaims all responsibility for the accuracy or completeness of the data shown hereon.

STREETS AND ZONING DESIGNATIONS IN SOUTH DAVIS SHORES

The following tables outline the types of uses that are already permitted in some form in the South Davis Shores area. The question remains whether these are the types of uses the neighborhood wants to continue promoting and encouraging, or if other regulations, such as parking, landscaping, or architectural guidelines should be applied to these uses if development is proposed in South Davis Shores.

Street	Designated Zoning	Permitted Uses
Alerto Street	Residential Single Family Two (RS-2)	<ul style="list-style-type: none"> ◆ Single-family dwellings ◆ Home offices, private
Anastasia Boulevard	Commercial Low Two (CL-2)	<ul style="list-style-type: none"> ◆ Retail outlets ◆ Service establishments ◆ Bank, loan companies, mortgage brokers, stockbrokers and similar financial institutions ◆ Professional business offices ◆ Art gallery, museum, community center, vocational, trade or business school, colleges and universities ◆ Wholesaling ◆ Commercial parking lots, automobile parking garages ◆ Hotels and motels ◆ Single-family dwellings ◆ Shopping plaza ◆ Home office, private ◆ Churches ◆ Multiple-family dwellings
Arricola Avenue	Residential Single Family Two (RS-2) Commercial Low One (CL-1)	<ul style="list-style-type: none"> ◆ Single-family dwellings ◆ Home offices, private ◆ Retail outlets ◆ Service establishments ◆ Tourist homes/bed and breakfast inns ◆ Professional business offices ◆ Churches ◆ Libraries and museums ◆ Single-family dwellings ◆ Multiple-family housing ◆ Rooming and boardinghouses ◆ Housing for the elderly ◆ Home office, private ◆ Antique shops
Cabeza Street	Residential Single Family Two (RS-2)	<ul style="list-style-type: none"> ◆ Single-family dwellings ◆ Home offices, private
Carver Street	Residential Single Family Two (RS-2)	<ul style="list-style-type: none"> ◆ Single-family dwellings ◆ Home offices, private
Coquina Avenue	Residential Single Family One (RS-1)	<ul style="list-style-type: none"> ◆ Single-family dwellings ◆ Home offices, private

Streets and Zoning Designations in South Davis Shores:

Street	Designated Zoning	Permitted Uses
Ferdinand Avenue	Residential Single Family Two (RS-2) Open Land	<ul style="list-style-type: none"> ◆ Single-family dwellings ◆ Home offices, private ◆ Marinas, bait and tackle shops ◆ Intermediate care facilities ◆ Outdoor markets ◆ Commercial recreational facilities ◆ Game preserves, wildlife management areas, fish hatcheries and refuges, watershed, water reservoirs and wells ◆ Churches, monasteries, convents, temporary revival establishments, cemeteries, columbariums, crematories, mausoleums and memorial structures and monuments ◆ Schools, colleges and universities with conventional academic curriculums ◆ Housing for the elderly ◆ Single-family dwellings on individual lots, provided that no subdivision plat is recorded ◆ Home office, private ◆ Day nurseries and kindergartens ◆ Governmental uses ◆ Professional and business offices ◆ Museums ◆ The sale of wine, various spirits or vinous liquors for religious or sacramental purposes
Garcia Avenue	Open Land	<ul style="list-style-type: none"> ◆ Marinas, bait and tackle shops ◆ Intermediate care facilities ◆ Outdoor markets ◆ Commercial recreational facilities ◆ Game preserves, wildlife management areas, fish hatcheries and refuges, watershed, water reservoirs and wells ◆ Churches, monasteries, convents, temporary revival establishments, cemeteries, columbariums, crematories, mausoleums and memorial structures and monuments ◆ Schools, colleges and universities with conventional academic curriculums ◆ Housing for the elderly ◆ Single-family dwellings on individual lots, provided that no subdivision plat is recorded ◆ Home office, private ◆ Day nurseries and kindergartens ◆ Governmental uses ◆ Professional and business offices ◆ Museums ◆ The sale of wine, various spirits or vinous liquors for religious or sacramental purposes

Streets and Zoning Designations in South Davis Shores:

Street	Designated Zoning	Permitted Uses
Herada Street	Residential Single Family Two (RS-2)	<ul style="list-style-type: none"> ◆ Single-family dwellings ◆ Home offices, private
Hermosa Street	Residential Single Family Two (RS-2)	<ul style="list-style-type: none"> ◆ Single-family dwellings ◆ Home offices, private
Kenan Street	Residential Single Family Two (RS-2)	<ul style="list-style-type: none"> ◆ Single-family dwellings ◆ Home offices, private
Luwanna Circle	Residential Single Family One (RS-1)	<ul style="list-style-type: none"> ◆ Single-family dwellings ◆ Home offices, private
Menendez Road	Residential Single Family Two (RS-2)	<ul style="list-style-type: none"> ◆ Single-family dwellings ◆ Home offices, private
Moultrie Place	Residential Single Family Two (RS-2)	<ul style="list-style-type: none"> ◆ Single-family dwellings ◆ Home offices, private
	<p>Commercial Low One (CL-1)</p> <p>Commercial Low Two (CL-2)</p>	<ul style="list-style-type: none"> ◆ Retail outlets ◆ Service establishments ◆ Tourist homes/bed and breakfast inns ◆ Professional business offices ◆ Churches ◆ Libraries and museums ◆ Single-family dwellings ◆ Multiple-family housing ◆ Rooming and boardinghouses ◆ Housing for the elderly ◆ Home office, private ◆ Antique shops ◆ Retail outlets ◆ Service establishments ◆ Bank, loan companies, mortgage brokers, stockbrokers and similar financial institutions ◆ Professional business offices ◆ Art gallery, museum, community center, vocational, trade or business school, colleges and universities ◆ Wholesaling ◆ Commercial parking lots, automobile parking garages ◆ Hotels and motels ◆ Single-family dwellings ◆ Shopping plaza ◆ Home office, private ◆ Churches ◆ Multiple-family dwellings

Streets and Zoning Designations in South Davis Shores:

Street	Designated Zoning	Permitted Uses
Solano Avenue	Residential Single Family One (RS-1)	<ul style="list-style-type: none"> ◆ Single-family dwellings ◆ Home offices, private
South Comares Avenue	Residential Single Family Two (RS-2) Commercial Low Two (CL-2)	<ul style="list-style-type: none"> ◆ Single-family dwellings ◆ Home offices, private ◆ Retail outlets ◆ Service establishments ◆ Bank, loan companies, mortgage brokers, stockbrokers and similar financial institutions ◆ Professional business offices ◆ Art gallery, museum, community center, vocational, trade or business school, colleges and universities ◆ Wholesaling ◆ Commercial parking lots, automobile parking garages ◆ Hotels and motels ◆ Single-family dwellings ◆ Shopping plaza ◆ Home office, private ◆ Churches ◆ Multiple-family dwellings
South Matanzas Boulevard	Residential Single Family One (RS-1) Residential Single Family Two (RS-2)	<ul style="list-style-type: none"> ◆ Single-family dwellings ◆ Home offices, private ◆ Single-family dwellings ◆ Home offices, private
White Street	Residential Single Family Two (RS-2) Commercial Low Two (CL-2)	<ul style="list-style-type: none"> ◆ Single-family dwellings ◆ Home offices, private ◆ Retail outlets ◆ Service establishments ◆ Bank, loan companies, mortgage brokers, stockbrokers and similar financial institutions ◆ Professional business offices ◆ Art gallery, museum, community center, vocational, trade or business school, colleges and universities ◆ Wholesaling ◆ Commercial parking lots, automobile parking garages ◆ Hotels and motels ◆ Single-family dwellings ◆ Shopping plaza ◆ Home office, private ◆ Churches ◆ Multiple-family dwellings

See St. Augustine's Code of Ordinances, Chapter 28: Zoning, Article III: Zoning Districts and District Regulations for more information about permitted uses, including uses by exception.

POSSIBLE ZONING ISSUES IN SOUTH DAVIS SHORES

The neighborhood should take this opportunity to identify existing zoning issues, such as nonconforming land uses. A zoning overlay district may provide a solution to these issues by including regulations that prevent their occurrence in future development.

Below is a list of potential items that the neighborhood may want to discuss as part of their evaluation. These issues as well as others may be addressed by this workbook process.

- ♦ Deteriorated building or infrastructure conditions
- ♦ Nonconforming lots, structures or land uses
- ♦ Conversion of single-family into multi-family residences
- ♦ Demolition of older homes, and disproportionate and/or architecturally incompatible redevelopment and new construction
- ♦ Scale, intensity and density of new development: separation of lots increasing neighborhood density
- ♦ Impacts of existing commercial on the neighborhood/encroachment of commercial corridor uses on the neighborhood
- ♦ Parking locations and screening
- ♦ Amount of street trees and canopy
- ♦ Conservation of surrounding natural areas and scenic vistas
- ♦ Location and types of recreational facilities

ZONING OVERLAY DISTRICTS

Definition of Zoning Overlay Districts:

A zoning overlay district is a special zone that is placed over a base zoning and provides additional regulations that supplements or supersedes the existing regulations. They may provide a higher level of regulation than what is required by the existing zoning or allow for more permitted uses and less-restrictive development guidelines. The overlay boundaries are not required to coincide with other zoning district boundaries and tend to encompass specific areas of the community, such as a neighborhood or commercial corridor.

Overlay districts are particularly useful to communities because they allow a specific areas issues and needs to be addressed without doing any major rezoning; an overlay district can be implemented by amending the City's current zoning ordinance without having to go through the process of rewriting the underlying zoning regulations. The community can modify the overlay district without difficulty, should they decide to change the requirements or coverage area.

It is important to understand that overlay regulations would only apply to changes to private property or new development going forward. Existing conditions would be allowed to remain until which time a property initiates the building permit process and required to comply with the overlay regulations.

Types of Zoning Overlay Districts:

A community may implement a zoning overlay district for a variety of reasons. Here are a few examples of common zoning overlay districts:

- ♦ **Conservation Overlay:** Regulates significant character-defining features of a neighborhood through demolition prevention and restrictions on the scale and design of allowable construction.
- ♦ **Architectural/Design Overlay:** Regulates aesthetic characteristics of a district, such as building height, fenestration, form, orientation, materials, color, etc.
- ♦ **Commercial Corridor Overlay:** Regulates land use and aesthetics to create a more pedestrian-friendly and mixed-use corridor environment.
- ♦ **Commercial Core Overlay:** Regulates aesthetics and land use in a central commercial area to promote consistent design and economic development.
- ♦ **Natural Resource Overlay:** Regulates certain activity and development to protect significant habitats and natural resources.

ZONING OVERLAY OPTIONS

Options for zoning overlay regulations:

A zoning overlay district is able to regulate a variety of elements of the built and natural environment. The neighborhood should identify what its current concerns and needs are, and use this information to build the specific requirements for its zoning overlay district.

Here is a list of possible regulatory tools/topics to include in your zoning overlay:

- ♦ **Conservation/Preservation:** provisions for the protection of historic or natural resources in the community.

- ♦ **Architectural Guidelines:** design guidelines that help create/maintain a particular look and feel of an area.

- ♦ **Landscaping:** certain landscaping and screening requirements for new construction and parking areas.

- ♦ **Development :** requirements for building height, size, and placement.

- ♦ **Land Use:** additional uses not permitted under current zoning.

- ♦ **Parking:** requirements for amount of parking, and placement and design of parking areas.

No Change

Alternatively, the neighborhood may choose to not adopt a zoning overlay district, but instead continue with the existing zoning regulations that the City currently has in place.

HOW TO ADOPT A ZONING OVERLAY DISTRICT

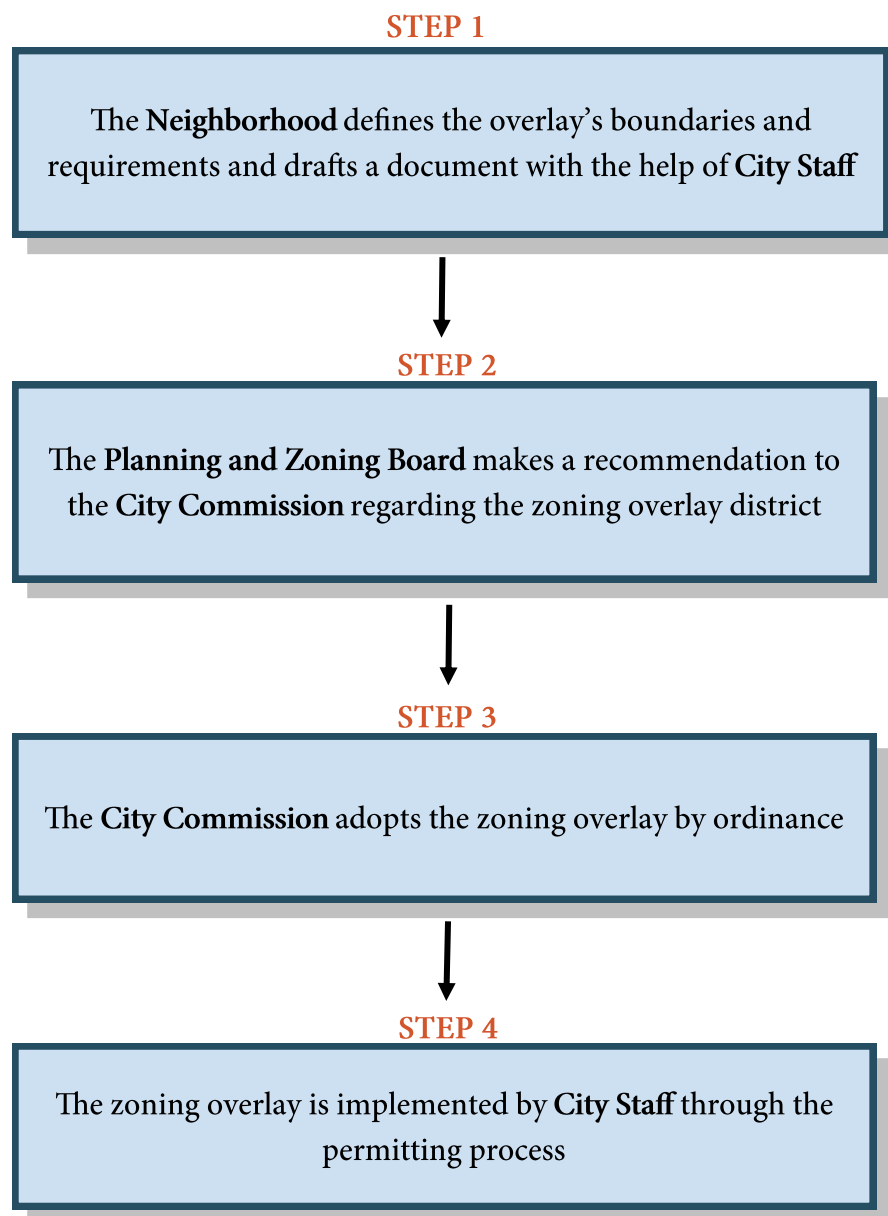
There are four main steps involved with creating and adopting a zoning overlay district:

Step 1: The neighborhood defines what it wants the zoning overlay to accomplish and then members of that neighborhood work with city staff to draft a document outlining the overlay's boundaries and specific requirements.

Step 2: The Planning and Zoning Board reviews this document at a public hearing and makes a recommendation to the City Commission.

Step 3: The City Commission then adopts the zoning overlay district by ordinance into the City's Zoning Code.

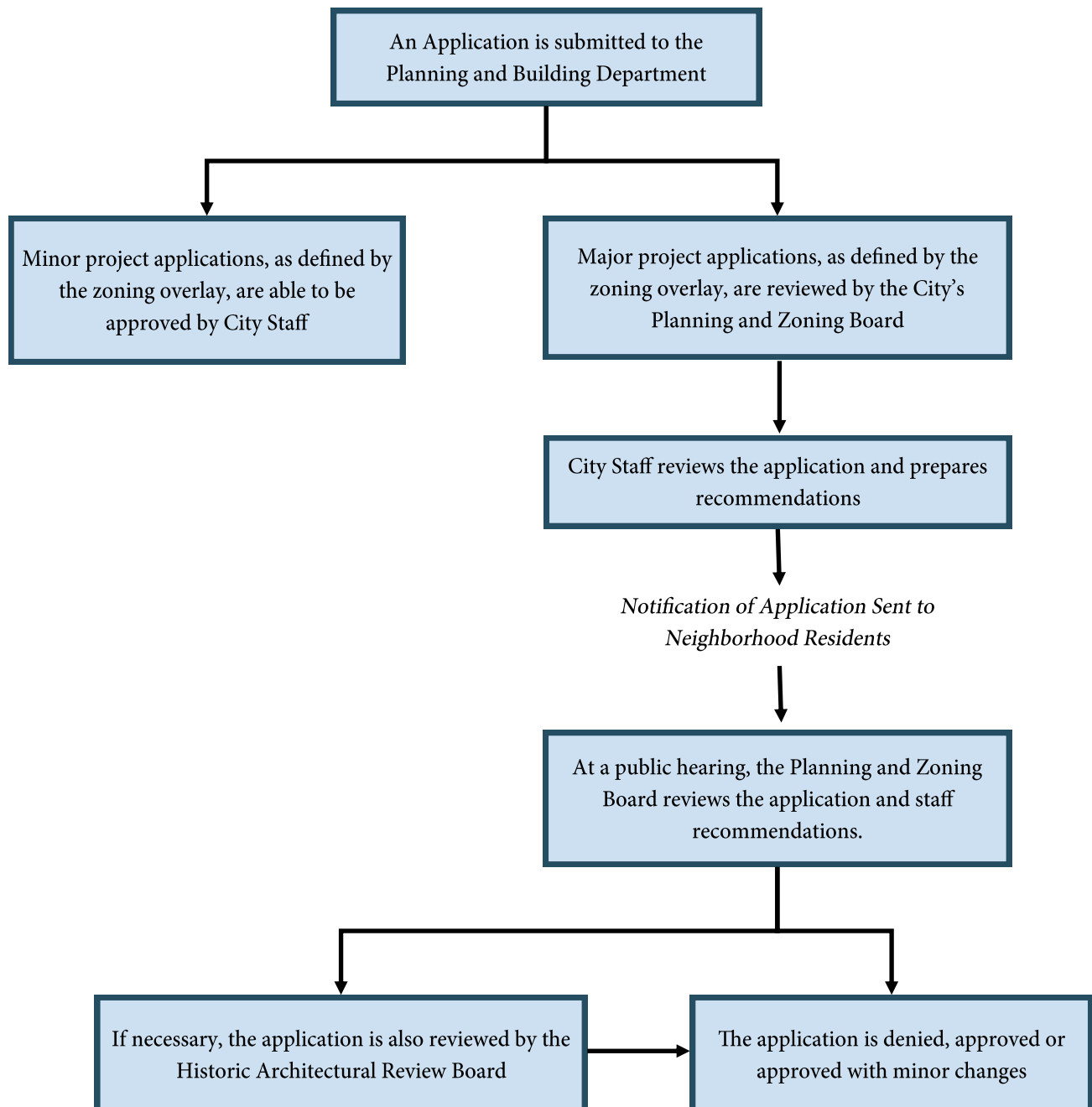
Step 4: The zoning overlay is enforced by city staff through the permitting process



HOW TO IMPLEMENT A ZONING OVERLAY DISTRICT

Once the zoning overlay district ordinance is adopted: City Staff will enforce the overlay requirements through the permitting process. When applications from the overlay district are submitted to the Planning and Building Department they will be reviewed for compliance with the overlay's specific requirements. Minor applications, as defined in the overlay district ordinance, will be able to be approved administratively by staff, while major applications will need to be reviewed by the Planning and Zoning Board, and if necessary the Historic Architectural Review Board as well, at public hearings.

The flowchart below outlines the potential processes for an application within a zoning overlay district:



OUTREACH AND COMMUNICATION

Options for gathering input from the neighborhood:

The zoning overlay district requirements should ideally reflect the views of all neighborhood residents and business owners. An important first step is to begin communicating with the various individuals and groups in the neighborhood to understand what their concerns and needs are. It will be necessary to conduct significant public outreach and engagement, in order to include as many citizens as possible in the planning process to build a consensus.

Here are some options for gathering input from neighborhood residents and business owners:

- ♦ **Neighborhood Association Meetings:** Use your neighborhood association's meetings as an opportunity to discuss concerns about the neighborhood and whether a zoning overlay district could be a solution to these issues. Make sure to get the word out about the meeting dates and times, and get creative in how you approach decision making. These meetings should include open discussions and interactive activities to ensure that everyone gets involved.
- ♦ **Public Workshops:** Special workshops could be scheduled during a time that is convenient for most residents, during which city staff conducts an interactive workshop that further explains the concept of zoning overlay districts and gathers feedback from the residents regarding what they would like to have included in their specific overlay requirements.
- ♦ **Surveys:** Open-ended questionnaires could be distributed to each resident of the neighborhood to gather information regarding their opinions on issues in the neighborhood, desires for changes in land use, building types, etc.
 - ♦ This survey could be distributed in a variety of ways: electronically, via mail, or during one of the meetings or workshops mentioned above
 - ♦ A sample survey is shown on the following page

SAMPLE SURVEY

1. What Best Describes You?
 - A. South Davis Shores Resident
 - B. South Davis Shores Business Owner
 - C. South Davis Shores Property Owner
 - D. Other _____
2. How long have you lived in St. Augustine/South Davis Shores?
 - A. Less than 5 Years
 - B. 5-10 years
 - C. 10 or More Years
 - D. I don't live in St. Augustine
3. What types of land uses do you associate with South Davis Shores? (Choose all that apply)
 - A. Single-Family Residential
 - B. Multi-Family Residential
 - C. Commercial (ex. retail, restaurant)
 - D. Business (ex. office)
 - E. Industrial
 - F. Institutional (ex. church, school, government)
4. How would you describe South Davis Shores' unique character?

5. Do you have any concerns for South Davis Shores?
 - A. Yes
 - B. No
 If yes, what are your concerns?:

6. What do you think could improve South Davis Shores? (Choose all that apply)
 - A. Better preservation of historic resources
 - B. Better appearance of buildings
 - C. Better placement and size of buildings
 - D. The addition of more types of buildings
 - E. Better landscaping and screening of properties
 - F. Better appearance and size of parking areas
 Explain your selection:

7. A zoning overlay district is a special zone that is placed over a base zoning and provides additional regulations that supplements or supersedes the existing regulations. Do you think a zoning overlay district would benefit South Davis Shores?
 - A. Yes
 - B. No
 If no, is there another alternative you think would better serve your neighborhood's needs and concerns?

8. What types of regulations should be included in South Davis Shores' zoning overlay, if one is considered?
 - A. Conservation/Preservation: Specifications for the protection of valuable resources in the community
 - B. Architectural Guidelines: Design guidelines that help create/maintain a particular look and feel of an area
 - C. Landscaping: Certain landscaping and screening requirements for new construction or parking areas
 - D. Development: Specific requirements for building height, bulk, mass, scale, placement, setback, etc.
 - E. Land Use: Additional uses not permitted under current zoning.
 - F. Parking: Specific requirements for amount of parking allowed, placement of parking, guidelines for parking area design and materials, etc.
9. Are you willing to have your property subject to additional regulations under a zoning overlay district?
 - A. Yes
 - B. No
10. Are you willing to participate in the process to create and adopt a zoning overlay district in South Davis Shores?
 - A. Yes
 - B. No
 If Yes, how can we best contact you?

NEIGHBORHOOD WORKSHEET

1. What are the most important features/characteristics of your neighborhood?

2. What do you feel are the greatest concerns and needs for your neighborhood?

NEIGHBORHOOD WORKSHEET

3. Would a zoning overlay district be an appropriate solution to these concerns?

4. What types of requirements should be included in your neighborhood's zoning overlay?

NEIGHBORHOOD WORKSHEET

5. What city entity should administer your neighborhood's zoning overlay district?
(i.e. Planning and Zoning Board, Historic Architectural Review Board, City Staff)

6. If you believe a zoning overlay is not the best solution for your neighborhood, what alternative(s) would you suggest to address your neighborhood's concerns and needs?

NEIGHBORHOOD MILESTONE AND TIMELINE WORKSHEET

In the worksheet below, suggest a timeline for your neighborhood's zoning overlay adoption:

MILESTONE 1

Items to accomplish:

- ◆ Assemble neighborhood stakeholders and groups
- ◆ Identify the concerns and needs of the neighborhood
- ◆ Decide whether an overlay district is the right solution
- ◆ Decide specific overlay boundaries

Suggested Deadline for Milestone 1:

MILESTONE 2

Item to accomplish:

- ◆ Draft the zoning overlay district document, with the help of city staff

Suggested Deadline for Milestone 2:

MILESTONE 3

Items to accomplish:

- ◆ Present the zoning overlay district to the Planning and Zoning Board at a public hearing
- ◆ The Planning and Zoning Board makes a recommendation to the City Commission regarding the overlay district
- ◆ The City Commission adopts the zoning overlay district by ordinance

Suggested Deadline for Milestone 3:

**Planning and Zoning Board and City Commission meeting dates, as well as application deadlines are available online at the City of St. Augustine's website: www.staugustinegovernment.com